

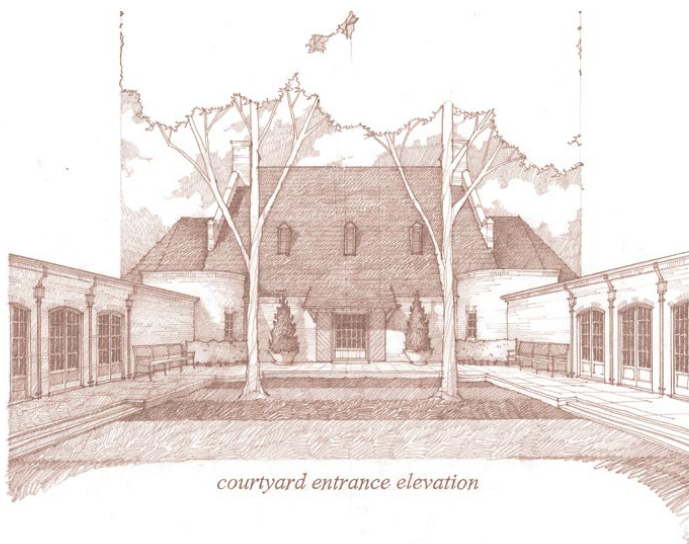
BIRMINGHAM-SOUTHERN COLLEGE



CLASS SCHEDULE BOOKLET

FALL TERM 2007

Revised August 1, 2007



NEW ADMISSION HOUSE, OPENING FALL 2007

<http://www.bsc.edu/records/schedules.htm>

TABLE OF CONTENTS

TABLE OF CONTENTS.....	2
CLASS SCHEDULE, FALL 2007 (SORTED BY TIME)	3
CLASS SCHEDULE, FALL 2007 (SORTED BY COURSE)	11
CLASS SCHEDULE INDEX, FALL 2007	19
1Y COURSES EXPLAINED	21
IMPORTANT NOTES FOR STUDENTS AND PARENTS.....	21
WEB REGISTRATION USING THESIS	22
COURSES REPEATED AND REDEEMED.....	22
BACHE PROGRAM	23
SCHEDULE CHANGES AFTER REGISTRATION.....	23
NEW ADD COURSE POLICY / PROCEDURE	23
CAMPUS BUILDING ABBREVIATIONS	24
VETERAN BENEFITS INFORMATION.....	24
STUDENT FINANCIAL AID SERVICES	24
FAMILY EDUCATION RIGHTS AND PRIVACY ACT (FERPA).....	24
THE S I S	25
ARC – ACADEMIC RESOURCE CENTER.....	25
CAMPUS MAP	26
ACADEMIC CALENDAR, FALL TERM 2007	27
READING DAYS AND FINAL EXAM SCHEDULE, FALL TERM 2007.....	28

CLASS SCHEDULE, FALL 2007 (SORTED BY TIME)

Course..... Syn. Short Title..... Bldg Room Mth Days.. Times..... BSC Formatted Name..... Cred.

M,W,F 8:00 - 9:00

BI 125 A	7042	Cellular & Molecular Biology	SSC 138		MWF	08:00AM - 09:00AM	Gretchen Repasky	1.00
BI 125L 1	7044	Cellular & Molecular Bio Lab	SSC 215	LAB T		12:30PM - 03:20PM	Gretchen Repasky	0.00
BI 125L 2	7046	Cellular & Molecular Bio Lab	SSC 215	LAB W		02:00PM - 04:50PM	Gretchen Repasky	0.00
BI 301 A	7063	Genetics	SSC 130		MWF	08:00AM - 09:00AM	Pamela Hanson	1.00
BI 301L 1	7067	Genetics Lab	SSC 211	LAB M		02:00PM - 04:50PM	Pamela Hanson	0.00
BI 301L 2	7070	Genetics Lab	SSC 211	LAB T		12:30PM - 03:20PM	Leo Pezzementi	0.00
BI 301L 3	7071	Genetics Lab	SSC 211	LAB W		02:00PM - 04:50PM	Melanie Styers	0.00
BI 408 A	7080	Biochemistry	SSC 336		MWF	08:00AM - 09:00AM	David Schedler	1.00
BI 408L 1	7081	Biochemistry Lab	SSC 207	LAB TH		12:30PM - 03:20PM	Gretchen Repasky	0.00
CH 408 A	7015	Biochemistry	SSC 336		MWF	08:00AM - 09:00AM	David Schedler	1.00
CH 408L 1	7017	Biochemistry Lab	SSC 207	LAB TH		12:30PM - 03:20PM	Gretchen Repasky	0.00
EH 102 D	7106	Introduction to Writing	HC 315		MWF	08:00AM - 09:00AM	Gail Smith	1.00
MA 115 A	6971	Fundamentals of Algebra	O 102		MWF	08:00AM - 09:00AM	Carl Brezausek	1.00
MA 207 A	6977	General Statistics	O 104		MWF	08:00AM - 09:00AM	Wesley Eddings	1.00
MA 231 E	7492	Calculus I	O 101		MWF	08:00AM - 09:00AM	(STAFF)	1.00
PS 101 A	6890	Intro to American Govt & Pol	HB 329	LEC MW		08:00AM - 09:00AM	Robert Slagter	1.00
SO 101 C	7458	Introduction to Sociology	HB 325	LEC WF		08:00AM - 09:00AM	Russell Davis	1.00
			HB 301	LAB M		08:00AM - 09:00AM		
			HB 301	LAB F		08:00AM - 09:00AM		

M,W,F 9:30 - 10:30

AC 361 A	7181	Business Law I	HB 225		MWF	09:30AM - 10:30AM	Bill Leland	1.00
AR 101 A	7139	Basic Painting	AR 6		MWF	09:30AM - 10:30AM	Bud Spivey	1.00
AR 150 A	7145	Drawing I	AR 7		MWF	09:30AM - 10:30AM	Jim Neel	1.00
BA 372 A	7205	Principles of Finance I	HB 228		MWF	09:30AM - 10:30AM	Sara Robicheaux	1.00
BA 372L 1	7208	Prin of Finance I Lab	DHAR DHAR	LAB			Sara Robicheaux	0.00
BI 115 A	7029	Organismal Biology	SSC 138		MWF	09:30AM - 10:30AM	Andrew Gannon	1.00
BI 115L 1	7031	Organismal Biology Lab	SSC 106	LAB M		02:00PM - 04:50PM	Andrew Gannon	0.00
BI 115L 2	7033	Organismal Biology Lab	SSC 106	LAB T		08:00AM - 10:50AM	Andrew Gannon	0.00
BI 115L 3	7036	Organismal Biology Lab	SSC 106	LAB T		12:30PM - 03:20PM	Jenny Estes	0.00
BI 115L 4	7038	Organismal Biology Lab	SSC 106	LAB W		02:00PM - 04:50PM	Brenda Hammer	0.00
BI 115L 5	7039	Organismal Biology Lab	SSC 106	LAB TH		08:00AM - 10:50AM	Natalie Warren	0.00
BI 115L 6	7040	Organismal Biology Lab	SSC 106	LAB TH		12:30PM - 03:20PM	Natalie Warren	0.00
BI 301 B	7065	Genetics	SSC 130		MWF	09:30AM - 10:30AM	Leo Pezzementi	1.00
BI 301L 1	7067	Genetics Lab	SSC 211	LAB M		02:00PM - 04:50PM	Pamela Hanson	0.00
BI 301L 2	7070	Genetics Lab	SSC 211	LAB T		12:30PM - 03:20PM	Leo Pezzementi	0.00
BI 301L 3	7071	Genetics Lab	SSC 211	LAB W		02:00PM - 04:50PM	Melanie Styers	0.00
CH 121 A	6993	General Chemistry I	SSC 134		MWF	09:30AM - 10:30AM	Scott Dorman	1.00
CH 121L 1	6995	General Chemistry I Lab	SSC 315	LAB T		12:30PM - 03:20PM	Laura Stultz	0.00
CH 121L 2	6996	General Chemistry I Lab	SSC 315	LAB W		02:00PM - 04:50PM	Joe Finkel	0.00
CH 121L 3	6997	General Chemistry I Lab	SSC 315	LAB W		06:30PM - 09:20PM	Joe Finkel	0.00
CH 121L 4	6998	General Chemistry I Lab	SSC 315	LAB TH		08:00AM - 10:50AM	Joe Finkel	0.00
CH 121L 5	6999	General Chemistry I Lab	SSC 315	LAB TH		12:30PM - 03:20PM	Joe Finkel	0.00
CH 121L 6	7450	General Chemistry I Lab	SSC 315	LAB T		08:00AM - 10:50AM	Scott Dorman	0.00
CH 121T 1	7000	General Chemistry Tutorial	SSC 134		MF	02:00PM - 03:20PM	Scott Dorman	0.00
CH 121T 2	7001	General Chemistry Tutorial	SSC 138		MF	02:00PM - 03:20PM	Clyde Stanton	0.00
CH 311 A	7011	Physical Chemistry I	SSC 336		MWF	09:30AM - 10:30AM	Clyde Stanton	1.00
CH 311L 1	7012	Physical Chemistry I Lab	SSC 309	LAB W		02:00PM - 04:50PM	Clyde Stanton	0.00
CS 430 A	6969	Data Communications	O 202	LEC MWF		09:30AM - 10:30AM	Lewis Patterson	1.00
			O 204	LAB MWF		09:30AM - 10:30AM		
DA 102 A	7206	Jazz Dance	ST 1		MWF	09:30AM - 10:30AM	(STAFF)	0.25
ED 121 A	7284	Strength Training	STRP STRP		F	09:30AM - 10:50AM	Duane Reboul	0.25
EH 200 A	7117	Intro to Literature	HC 003		MWF	09:30AM - 10:30AM	Tynes Cowan	1.00
EH 260 A	7151	Survey of American Literature	HC 007		MWF	09:30AM - 10:30AM	Gail Smith	1.00
EH 351 A	7155	Medieval British Lit (Cat. 3)	HC 317		MWF	09:30AM - 10:30AM	Susan Hagen	1.00
EPY 223 B-1Y	7314	Human Growth and Development	HB 126		MWF	09:30AM - 10:30AM	Eileen Moore	1.00
EPY 223L 2	7317	Hum Growth & Dev - B-1Y LAB	DHAR DHAR	LAB			Eileen Moore	0.00
HI 120 A-1Y	7084	History of Terrorism	HC 303		MWF	09:30AM - 10:30AM	Randy Law	1.00
HI 151 B	7449	History of American People I	SSC 238		MWF	09:30AM - 10:30AM	Victoria Ott	1.00
HI 181 A-1Y	7083	East Asian Civil I : China	HC 215		MWF	09:30AM - 10:30AM	Matthew Levey	1.00
LA 101 A	7054	Elementary Latin I	HC 319		MWF	09:30AM - 10:30AM	Sam Pezzillo	1.00
MA 115 B	7490	Fundamentals of Algebra	O 101		MWF	09:30AM - 10:30AM	Carl Brezausek	1.00
MA 207 B	6978	General Statistics	O 104		MWF	09:30AM - 10:30AM	Wesley Eddings	1.00
MA 231 A	6979	Calculus I	O 102		MWF	09:30AM - 10:30AM	Mary Jane Turner	1.00
MU 136 A	7238	Basic Music Skills & Concepts	H 104		MWF	09:30AM - 10:30AM	Ron Hooten	1.00
MU 151 A	7241	Elementary Theory I	H 117		MWF	09:30AM - 10:30AM	Dorothy Hindman	0.50
MU 251 A	7254	Advanced Theory I	H 106		MWF	09:30AM - 10:30AM	Charles Mason	0.50
PL 251 A	7059	Hist of Western Philosophy I	HC 112		MWF	09:30AM - 10:30AM	Steve Hendley	1.00

PS 101 B	6892	Intro to American Govt & Pol	HB	329	LEC MW	09:30AM - 10:30AM	Robert Slagter	1.00
			HB	301	LAB F	09:30AM - 10:30AM		
PY 101 B	6893	Introduction to Psychology	SSC	334	MWF	09:30AM - 10:30AM	Heather Meggers-Wrig	1.00
RE 201 A	7069	Introduction to Christianity	HC	315	MWF	09:30AM - 10:30AM	Lawrence Brasher	1.00
SO 101 A	6980	Introduction to Sociology	HB	101	LEC WF	09:30AM - 10:30AM	Alicia Weaver	1.00
			HB	301	LAB M	09:30AM - 10:30AM		
THA 211 A	7047	Stage Lighting	TH	RED	MWF	09:30AM - 10:30AM	Matthew Mielke	1.00

M,W,F 11:00 - 12:00

AR 102 B	7446	Basic Design	PA	125	MWF	11:00AM - 12:00PM	Bud Spivey	1.00
AR 112 A	7143	Three-Dimensional Design	PA	227	MWF	11:00AM - 12:00PM	Jim Neel	1.00
AS 101 A	6920	General Astronomy	SSC	130	MWF	11:00AM - 12:00PM	Mark Rupright	1.00
AS 101L 1	6921	General Astronomy Lab	SSC	111	LAB T	07:00PM - 09:50PM	Mark Rupright	0.00
AS 101L 2	7456	General Astronomy Lab	SSC	111	LAB TH	07:00PM - 09:50PM	Duane H. Pontius, Jr	0.00
BA 372 B	7210	Principles of Finance I	HB	228	MWF	11:00AM - 12:00PM	Sara Robicheaux	1.00
BI 225 A	7060	Evolutionary Ecology	SSC	334	MWF	11:00AM - 12:00PM	Peter Van Zandt	1.00
BI 442 A	7082	Comparative Vertebrate Anatomy	SSC	238	MWF	11:00AM - 12:00PM	Jeanette Runquist	1.00
BI 442L 1	7090	Comparative Vertebrate Ana Lab	SSC	219	LAB W	02:00PM - 04:50PM	Jeanette Runquist	0.00
CH 121 B	6994	General Chemistry I	SSC	134	MWF	11:00AM - 12:00PM	Clyde Stanton	1.00
CH 121L 1	6995	General Chemistry I Lab	SSC	315	LAB T	12:30PM - 03:20PM	Laura Stultz	0.00
CH 121L 2	6996	General Chemistry I Lab	SSC	315	LAB W	02:00PM - 04:50PM	Joe Finkel	0.00
CH 121L 3	6997	General Chemistry I Lab	SSC	315	LAB W	06:30PM - 09:20PM	Joe Finkel	0.00
CH 121L 4	6998	General Chemistry I Lab	SSC	315	LAB TH	08:00AM - 10:50AM	Joe Finkel	0.00
CH 121L 5	6999	General Chemistry I Lab	SSC	315	LAB TH	12:30PM - 03:20PM	Joe Finkel	0.00
CH 121L 6	7450	General Chemistry I Lab	SSC	315	LAB T	08:00AM - 10:50AM	Scott Dorman	0.00
CH 121T 1	7000	General Chemistry Tutorial	SSC	134	MF	02:00PM - 03:20PM	Scott Dorman	0.00
CH 121T 2	7001	General Chemistry Tutorial	SSC	138	MF	02:00PM - 03:20PM	Clyde Stanton	0.00
CH 149 A-1Y	7002	Chemical Principles	SSC	336	MWF	11:00AM - 12:00PM	Laura Stultz	1.00
CH 149L 1	7003	Chem Principles Lab	SSC	301	LAB TH	12:30PM - 03:20PM	Laura Stultz	0.00
CH 211 A	7005	Organic Chemistry I	SSC	138	MWF	11:00AM - 12:00PM	David Schedler	1.00
CH 211L 1	7007	Organic Chemistry I Lab	SSC	317	LAB T	08:00AM - 10:50AM	R. Arnold-Stanton	0.00
CH 211L 2	7008	Organic Chemistry I Lab	SSC	317	LAB T	12:30PM - 03:20PM	David Schedler	0.00
CH 211L 3	7009	Organic Chemistry I Lab	SSC	317	LAB W	02:00PM - 04:50PM	David Schedler	0.00
CS 170 A	6962	Introduction to Computing	O	205	LEC MWF	11:00AM - 12:00PM	Richard Turner	1.00
			O	201	LAB MWF	11:00AM - 12:00PM		
DA 101 A	7204	Basic Ballet	ST	1	MWF	11:00AM - 12:00PM	Teri Weksler	0.50
DA 303 A	7217	Classical Ballet Repertoire	ST	C	MWF	11:00AM - 12:00PM	Mira Popovich	0.25
EH 102 G	7109	Introduction to Writing	HC	213	MWF	11:00AM - 12:00PM	Clare Clifford	1.00
EH 250 A	7138	Survey of British Literature	HC	303	MWF	11:00AM - 12:00PM	Michael McInturff	1.00
GN 220 A	6959	Intermediate German	HC	215	MWF	11:00AM - 12:00PM	Judith Cox	1.00
HI 151 A	7086	History of American People I	HC	112	MWF	11:00AM - 12:00PM	Victoria Ott	1.00
HI 152 A-1Y	7085	History of American People II	HC	315	MWF	11:00AM - 12:00PM	Bill Nicholas	1.00
MA 124 B	7491	Precalculus Mathematics	O	104	MWF	11:00AM - 12:00PM	E. Ray Miller	1.00
MA 231 B	6981	Calculus I	O	101	MWF	11:00AM - 12:00PM	Mary Jane Turner	1.00
MA 232 A	6984	Calculus II	O	102	MWF	11:00AM - 12:00PM	Bernadette Mullins	1.00
MA 310 A	6987	Calculus III	O	105	MWF	11:00AM - 12:00PM	Doug Riley	1.00
MU 150 A-1Y	7240	Fundamentals of Music	H	117	MWF	11:00AM - 12:00PM	Dorothy Hindman	1.00
MU 321 A	7255	Music History I	H	106	MWF	11:00AM - 12:00PM	James Cook	1.00
PY 101 C	6894	Introduction to Psychology	HB	325	MWF	11:00AM - 12:00PM	Heather Meggers-Wrig	1.00
SN 220 A	6954	Intermediate Spanish	HC	007	MWF	11:00AM - 12:00PM	Janie Spencer	1.00
SN 270 A-1Y	7407	Tertulia Espanola	HC	003	MWF	11:00AM - 12:00PM	J. Ramos de Harthun	1.00
THA 120 A-1Y	7027	Beginning Acting	TH	1	MWF	11:00AM - 12:00PM	Alan Litsey	1.00

M,W,F 12:30 - 1:30

BI 115 B	7030	Organismal Biology	SSC	138	MWF	12:30PM - 01:30PM	Andrew Gannon	1.00
BI 115L 1	7031	Organismal Biology Lab	SSC	106	LAB M	02:00PM - 04:50PM	Andrew Gannon	0.00
BI 115L 2	7033	Organismal Biology Lab	SSC	106	LAB T	08:00AM - 10:50AM	Andrew Gannon	0.00
BI 115L 3	7036	Organismal Biology Lab	SSC	106	LAB T	12:30PM - 03:20PM	Jenny Estes	0.00
BI 115L 4	7038	Organismal Biology Lab	SSC	106	LAB W	02:00PM - 04:50PM	Brenda Hammer	0.00
BI 115L 5	7039	Organismal Biology Lab	SSC	106	LAB TH	08:00AM - 10:50AM	Natalie Warren	0.00
BI 115L 6	7040	Organismal Biology Lab	SSC	106	LAB TH	12:30PM - 03:20PM	Natalie Warren	0.00
CS 290 A	6967	Data Structures	O	205	LEC MWF	12:30PM - 01:30PM	Marietta Cameron	1.00
			O	201	LAB MWF	12:30PM - 01:30PM		
CS 420 A	6968	Database Management Systems	O	202	LEC MWF	12:30PM - 01:30PM	Lewis Patterson	1.00
			O	204	LAB MWF	12:30PM - 01:30PM		
DA 103 A	7207	Basic Modern Dance	ST	1	MWF	12:30PM - 01:30PM	Teri Weksler	0.25
EH 220 B-1Y	7131	Lit and the Social Experience	HC	303	MWF	12:30PM - 01:30PM	John Tatter	1.00
EH 388 A	7157	Lit & Cul of Amer Rena(Cat.2)	HC	218	MWF	12:30PM - 01:30PM	Gail Smith	1.00
FR 270 A	6946	Conversation francaise	HC	319	MWF	12:30PM - 01:30PM	Renee Norrell	1.00
GN 310 A	6960	German Landeskunde	HC	215	MWF	12:30PM - 01:30PM	Judith Cox	1.00
HI 102 A	7087	European Civilization I	SSC	130	MWF	12:30PM - 01:30PM	Law/Lester	1.00
MA 231 C	6982	Calculus I	O	101	MWF	12:30PM - 01:30PM	Doug Riley	1.00
MA 232 B	6985	Calculus II	O	102	MWF	12:30PM - 01:30PM	Bernadette Mullins	1.00
MA 317 A	6988	Linear Algebra	O	104	MWF	12:30PM - 01:30PM	Wesley Eddings	1.00

MU 121 A	7232	Introduction to Music	H	117	MWF	12:30PM - 01:30PM	Matthew Phillips	1.00
MU 450 A	7261	Orchestration	H	106	MWF	12:30PM - 01:30PM	Dorothy Hindman	0.50
PH 201 A	6922	Mathematical Tools for Physics	SSC	336	MWF	12:30PM - 01:30PM	Duane H. Pontius, Jr	1.00
SN 270 B	6955	Tertulia Espanola	HC	213	MWF	12:30PM - 01:30PM	Janie Spencer	1.00
THA 120 B	7035	Beginning Acting	TH	1	MWF	12:30PM - 01:30PM	Charla Cochran	1.00

M,W,F 2:00 - 3:00

CS 170 C	6964	Introduction to Computing	O	205	LEC MWF	02:00PM - 03:00PM	Richard Turner	1.00
			O	201	LAB MWF	02:00PM - 03:00PM		
DA 201 A	7209	Ballet Technique	ST	1	MWF	02:00PM - 03:20PM	Kelly Harper Avery	0.50
ED 129 A	7295	Basketball	STRP	STRP	M	02:00PM - 03:20PM	Duane Reboul	0.25
ED 128 A	7292	Racquetball	STRP	STRP	W	02:00PM - 03:20PM	Duane Reboul	0.25
HI 284 A	7088	Modern Japan	HC	215	MWF	02:00PM - 03:00PM	Matthew Levey	1.00
LA 101 B	7055	Elementary Latin I	HC	317	MWF	02:00PM - 03:00PM	Sam Pezzillo	1.00
MA 231 D	6983	Calculus I	O	101	MWF	02:00PM - 03:00PM	E. Ray Miller	1.00
MA 335 A	6989	Transition to Higher Math	O	102	MWF	02:00PM - 03:00PM	Bernadette Mullins	1.00
MA 458 A	6991	Intro to Complex Analysis	O	105	MWF	02:00PM - 03:00PM	Jeffrey Barton	1.00
MU 242 A	7252	Opera Workshop	H	123	MWF	02:00PM - 03:00PM	Mildred Allen	0.25
RE 221 A	7079	Religions of The East	HC	112	MWF	02:00PM - 03:00PM	Amy Cottrill	1.00
SN 220 B	7522	Intermediate Spanish	HC	005	MWF	02:00PM - 03:00PM	Janie Spencer	1.00

M,W 8:00-9:20

AR 100 A-1Y	7128	First Exper in Studio Art	PA	227	MW	08:00AM - 09:20AM	Pamela Venz	1.00
AR 102 A	7130	Basic Design	AR	7	MW	08:00AM - 09:20AM	Johnny Goodwin	1.00
BA 400 A	7211	Intnl Strategic Issues	HB	227	MW	08:00AM - 09:20AM	Byron Chew	1.00
EH 102 A	7102	Introduction to Writing	HC	317	MW	08:00AM - 09:20AM	(STAFF)	1.00
EH 204 A	7118	Writing for the Print Media	HC	213	MW	08:00AM - 09:20AM	Peter Donahue	1.00
PS 235 A	6902	Intro to Internatl Relations	HB	327	MW	08:00AM - 09:20AM	Vincent Gawronski	1.00
PY 101 E	6899	Introduction to Psychology	HB	328	MW	08:00AM - 09:20AM	Richard Rector	1.00

M,W 9:30-10:50

AC 221 B	7175	Accounting I	HB	328	MW	09:30AM - 10:50AM	Tara Sudderth	1.00
AR 111 A	7140	Two-Dimensional Design	PA	227	MW	09:30AM - 10:50AM	Kevin Shook	1.00
ARH 216 A	7148	Survey of Art History II	AR	10	MW	09:30AM - 10:50AM	Kathleen Spies	1.00
BA 201 B-1Y	7195	Foundations of Bus Thought	HB	227	MW	09:30AM - 10:50AM	Byron Chew	1.00
ED 360 A	7347	Collaborative Teaching Methods	HB	102	MW	09:30AM - 10:50AM	Carol Standifer	1.00
ED 360L 1	7348	Collab Tch Meth - Lab	DHAR	DHAR	LAB		Carol Standifer	0.00
EH 102 C	7105	Introduction to Writing	HC	005	MW	09:30AM - 10:50AM	(STAFF)	1.00
HI 241 A	7089	Monarchs, Rebellion, & Empire	HC	213	MW	09:30AM - 10:50AM	Mark Lester	1.00
PS 240 A	6904	Intro to Latin Amer Politics	HB	325	MW	09:30AM - 10:50AM	Vincent Gawronski	1.00
SO 102 A	6992	Contemporary Social Problems	HB	327	MW	09:30AM - 10:50AM	Guy Dalto	1.00

M,W 11:00-12:20

AC 221 C	7176	Accounting I	HB	225	MW	11:00AM - 12:20PM	Ron Stunda	1.00
AR 103 A	7142	Basic Photography	PA	126	MW	11:00AM - 12:20PM	Pamela Venz	1.00
AR 250 A	7152	Drawing II	AR	7	MW	11:00AM - 12:20PM	Steve Cole	1.00
ARH 114 A	7144	Introduction to Art Issues	AR	10	MW	11:00AM - 12:20PM	Kathleen Spies	1.00
BA 201 C-1Y	7197	Foundations of Bus Thought	HB	227	MW	11:00AM - 12:20PM	Byron Chew	1.00
EC 202 B	7188	Principles of Economics II	HB	202	MW	11:00AM - 12:20PM	Paul Cleveland	1.00
EH 395 A	7161	Cont Internat Fiction (Cat.4)	HC	319	MW	11:00AM - 12:20PM	Jane Archer	1.00
EPY 260 A	7319	Survey of Exceptional Children	HB	102	MW	11:00AM - 12:20PM	Carol Standifer	1.00
EPY 260L 1	7322	Surv of Except Child - Lab	DHAR	DHAR	LAB		Carol Standifer	0.00
LS 200 A	6911	Lead. Stud:Theory & Practice	HB	304	MW	11:00AM - 12:20PM	Ed LaMonte	1.00
PL 470 A	7061	Seminar in Philosophy	HC	004	MW	11:00AM - 12:20PM	Steve Hendley	1.00
RE 231 A	7072	Religion and Society	HC	317	MW	11:00AM - 12:20PM	Lawrence Brasher	1.00
SO 101 B	6990	Introduction to Sociology	HB	329	LEC WF	11:00AM - 12:00PM	Alicia Weaver	1.00
			HB	301	LAB M	11:00AM - 12:00PM		
SO 102 B	7004	Contemporary Social Problems	HB	327	MW	11:00AM - 12:20PM	Guy Dalto	1.00

M,W 12:30-1:50

AC 321 A	7178	Intermediate Accounting I	HB	225	MW	12:30PM - 01:50PM	Ron Stunda	1.00
ARH 311 A	7234	Roman Art	AR	12	MW	12:30PM - 01:50PM	Timothy Smith	1.00
BI 314 A	7076	Conservation Biology	SSC	334	MW	12:30PM - 01:50PM	Scot Duncan	1.00
BI 314L 1	7078	Conservation Biology Lab	SSC	105	LAB M	02:00PM - 04:50PM	Scot Duncan	0.00
EC 430 A	7191	Econ Growth and Development	HB	228	MW	12:30PM - 01:50PM	Kathleen Rossmann	1.00
ED 317 A	7329	Teaching Social Studies	HB	101	MW	12:30PM - 01:50PM	Kelly Russell	1.00
ED 317L 1	7331	Tch Soc Studies - Lab	DHAR	DHAR	LAB		Kelly Russell	0.00
EH 102 N	7521	Introduction to Writing	HC	317	MW	12:30PM - 01:50PM	Clare Clifford	1.00

PS 235 B	7452 Intro to Internatl Relations	HB	325	MW	12:30PM - 01:50PM	Vincent Gawronski	1.00
PY 309 A	6934 Work Behavior	HB	328	MW	12:30PM - 01:50PM	Rick McCallum	1.00
PY 417 A	6942 Research in Psychology	HB	304	MW	12:30PM - 01:50PM	Lynne Trench	1.00
SO 309 A	7014 Work Behavior	HB	328	MW	12:30PM - 01:50PM	Rick McCallum	1.00

M,W 2:00-3:20/4:50

AC 324 A	7179 Cost Accounting	HB	225	MW	02:00PM - 03:20PM	Ron Stunda	1.00
AC 421 A	7183 Auditing	HB	202	MW	02:00PM - 03:20PM	Susan Cockrell	1.00
AR 220 A	7149 International Film I	AR	10	MW	02:00PM - 04:50PM	Robert Shelton	1.00
AR 306 A	7163 Painting I	AR	6	MW	02:00PM - 04:50PM	Steve Cole	1.00
AR 307 A	7165 Painting II	AR	6	MW	02:00PM - 04:50PM	Steve Cole	1.00
AR 308 A	7166 Painting III	AR	6	MW	02:00PM - 04:50PM	Steve Cole	1.00
AR 311 A	7167 Sculpture I	AR	8	MW	02:00PM - 04:50PM	Jim Neel	1.00
AR 312 A	7168 Sculpture II	AR	8	MW	02:00PM - 04:50PM	Jim Neel	1.00
AR 313 A	7169 Sculpture III	AR	8	MW	02:00PM - 04:50PM	Jim Neel	1.00
BA 474 A	7215 Adv and Intl Fin Mgnt	HB	228	MW	02:00PM - 03:20PM	Sara Robicheaux	1.00
EC 202 C	7189 Principles of Economics II	HB	227	MW	02:00PM - 03:20PM	Paul Cleveland	1.00
ED 219 A	7306 Creative Arts in Teaching	HB	126	MW	02:00PM - 03:20PM	Eileen Moore	1.00
ED 219L 1	7308 Creative Arts in Tch - Lab	DHAR DHAR LAB				Eileen Moore	0.00
EH 210 B	7125 Introduction to Fiction	HC	315	MW	02:00PM - 03:20PM	Jane Archer	1.00
EH 301 A	7153 Fiction Workshop	HC	010	MW	02:00PM - 03:20PM	Peter Donahue	1.00
EH 470 A	7164 English Seminar	HC	303	MW	02:00PM - 03:20PM	Michael McInturff	1.00
HI 265 A	7091 The Mid East in 20th Cent	HC	007	MW	02:00PM - 03:20PM	Mark Lester	1.00
HON 125 A-1Y	7236 America's Music	H	106	MW	02:00PM - 03:20PM	Lester Seigel	1.00
HON 220 A	7150 International Film I	AR	10	MW	02:00PM - 04:50PM	Robert Shelton	1.00
IS 100 A	6912 Intro to International Studies	HB	325	MW	02:00PM - 03:20PM	Robert Slagter	1.00
MU 125 A-1Y	7235 America's Music	H	106	MW	02:00PM - 03:20PM	Lester Seigel	1.00
PL 201 A	7523 Introduction to Philosophy	HC	003	MW	02:00PM - 03:20PM	Bill Myers	1.00
PY 410 A	6943 Hist and Systems of Psychology	HB	304	MW	02:00PM - 03:20PM	Terry Goodrick	1.00
SN 350 A	6957 Latinos in the United States	HC	218	MW	02:00PM - 03:20PM	J. Ramos de Harthun	1.00
THA 403 A	7394 Directing and Stage Management	TH	1	MW	02:00PM - 03:20PM	Alan Litsey	1.00

M,W 3:30-4:50

EC 308 A	7190 Macroeconomics	HB	225	MW	03:30PM - 04:50PM	Paul Cleveland	1.00
FR 315 A	6947 Adv Grammar and Composition	HC	319	MW	03:30PM - 04:50PM	Renee Norrell	1.00
HI 470 A	7094 Senior Research Symposium	HC	303	MW	03:30PM - 04:50PM	Victoria Ott	1.00
RE 215 B	7478 New Testament	HC	315	MW	03:30PM - 04:50PM	Sally Allocca	1.00

W,F 8:00-9:20

AC 221 A	7174 Accounting I	HB	228	WF	08:00AM - 09:20AM	Tara Sudderth	1.00
BA 311 A	7196 Quant Analyls for Busi and Econ	HB	202	WF	08:00AM - 09:20AM	Bert Morrow	1.00
EC 311 A	7194 Quant Analysis for Bus & Econ	HB	202	WF	08:00AM - 09:20AM	Bert Morrow	1.00

W,F 9:30-10:50

BA 320 A	7198 Principles of Management	HB	202	WF	09:30AM - 10:50AM	Bert Morrow	1.00
FR 220 A	6944 Intermediate French	M	311	WF	09:30AM - 10:50AM	Leah Dupre	1.00

W,F 11:00-12:20

HON 225 A	6933 Creativity: Person & Process	HB	328	WF	11:00AM - 12:20PM	Goodrick/Anderson	1.00
PY 225 A	6932 Creativity: Person & Process	HB	328	WF	11:00AM - 12:20PM	Goodrick/Anderson	1.00

W,F 12:30-1:50

AR 471 A	7154 Senior Studio I	AR	12	WF	12:30PM - 01:50PM	Bud Spivey	1.00
BA 320 B	7200 Principles of Management	HB	227	WF	12:30PM - 01:50PM	Bill Hamer	1.00
HI 301 A	7095 Amer Revolu & the Feder Period	HC	315	WF	12:30PM - 01:50PM	Victoria Ott	1.00

T,TH 8:00 - 9:20/10:50

AR 321 A	7170 Photography I	PA	126	TTH	08:00AM - 10:50AM	Pamela Venz	1.00
AR 322 A	7171 Photography II	PA	126	TTH	08:00AM - 10:50AM	Pamela Venz	1.00
AR 323 A	7172 Photography III	PA	126	TTH	08:00AM - 10:50AM	Pamela Venz	1.00
BI 101 A	7025 Explorations in Biology	SSC	134	TTH	08:00AM - 09:20AM	Peter Van Zandt	1.00
BI 101L 1	7026 Explorations in Biol Lab	SSC	101	LAB T	12:30PM - 03:20PM	Peter Van Zandt	0.00
BI 101L 2	7028 Explorations in Biol Lab	SSC	101	LAB W	02:00PM - 04:50PM	Peter Van Zandt	0.00

BI 101L 3	7483	Explorations in Biol Lab	SSC	101	LAB TH	12:30PM - 03:20PM	(STAFF)	0.00
CS 170 B	6963	Introduction to Computing	O	202	LEC TTH	08:00AM - 09:20AM	Lewis Patterson	1.00
			O	201	LAB TTH	08:00AM - 09:20AM		
DA 410 A	7221	Dance Pedagogy	ST	2	TTH	08:00AM - 09:20AM	Mira Popovich	0.50
EC 201 A	7185	Principles of Economics I	HB	202	TTH	08:00AM - 09:20AM	Aubrey Drewry	1.00
ED 201 A	7304	Intro to Education	HB	102	TTH	08:00AM - 09:20AM	Clint E. Bruess	1.00
ED 315 A	7324	Reading I: Developmental Read	HB	101	TTH	08:00AM - 09:20AM	G. McCorquodale	1.00
ED 315L 1	7326	Reading I: Dev Reading Lab	DHAR	DHAR	LAB		G. McCorquodale	0.00
ED 323 A	7339	Teaching High School Subjects	HB	126	TTH	08:00AM - 09:20AM	Mary Jane Turner	0.75
EH 102 B	7103	Introduction to Writing	HC	317	TTH	08:00AM - 09:20AM	Tynes Cowan	1.00
EH 102 L	7115	Introduction to Writing	HC	319	TTH	08:00AM - 09:20AM	(STAFF)	1.00
EH 205 A	7119	Intro to Creative Writing	HC	315	TTH	08:00AM - 09:20AM	Sandra Sprayberry	1.00
EH 212 B-1Y	7506	Intro to Science Fiction	HC	213	TTH	08:00AM - 09:20AM	Kent Andersen	1.00
MA 150 C	6975	Intro to Mathematical Modeling	O	104	TTH	08:00AM - 09:20AM	(STAFF)	1.00
MU 153 A	7242	Beginning Ear Training I	H	106	TTH	08:00AM - 09:20AM	Neal Matherne	0.25
MU 161 A	7245	Advanced Keyboard Harmony I	H	122	TTH	08:00AM - 09:20AM	Adam Bowles	0.25
PY 101 F	6900	Introduction to Psychology	HB	328	TTH	08:00AM - 09:20AM	Richard Rector	1.00
RE 205 A	7075	Old Testament	HC	303	TTH	08:00AM - 09:20AM	Amy Cottrill	1.00

T,TH 9:30 - 10:50

AC 341 A	7180	Income Tax I	HB	202	TTH	09:30AM - 10:50AM	Tara Sudderth	1.00
AR 104 A	7132	Basic Drawing	AR	7	TTH	09:30AM - 10:50AM	Steve Cole	1.00
AR 111 B	7141	Two-Dimensional Design	PA	227	TTH	09:30AM - 10:50AM	Kevin Shook	1.00
ARH 215 A	7146	Survey of Art History I	AR	10	TTH	09:30AM - 10:50AM	Timothy Smith	1.00
ARH 415 A	7173	19th Century Art	AR	12	TTH	09:30AM - 10:50AM	Kathleen Spies	1.00
BA 201 A	7193	Foundations of Bus Thought	HB	227	TTH	09:30AM - 10:50AM	Stephen Craft	1.00
BA 363 A	7203	Legal Env of Intl Business	HB	228	TTH	09:30AM - 10:50AM	Jack Taylor	1.00
CS 465 A	6970	Artificial Intelligence	O	202	LEC TTH	09:30AM - 10:50AM	Marietta Cameron	1.00
			O	201	LAB TTH	09:30AM - 10:50AM		
EC 201 B	7186	Principles of Economics I	HB	225	TTH	09:30AM - 10:50AM	Aubrey Drewry	1.00
ED 126 A	7287	Tennis I	TC	TC	T	09:30AM - 10:50AM	Duane Reboul	0.25
ED 127 A	7289	Tennis II	TC	TC	TH	09:30AM - 10:50AM	Duane Reboul	0.25
ED 318 A	7334	Reading III : Children's Lit	HB	101	TTH	09:30AM - 10:50AM	G. McCorquodale	1.00
ED 318L 1	7336	Tch Reading III - Lab	DHAR	DHAR	LAB		G. McCorquodale	0.00
ED 340 A	7340	Meth for Tch Eh Lang Ar Sec Ed	HB	126	TTH	09:30AM - 10:50AM	Mary Jane Turner	0.25
ED 341 A	7341	Meth for Tch Mod Forei Lang-Se	HB	126	TTH	09:30AM - 10:50AM	Mary Jane Turner	0.25
ED 342 A	7342	Meth for Tch Math in Sec Ed	HB	126	TTH	09:30AM - 10:50AM	Mary Jane Turner	0.25
ED 343 A	7343	Meth for Tch Soc Stud Sec Ed	HB	126	TTH	09:30AM - 10:50AM	Mary Jane Turner	0.25
EH 102 E	7107	Introduction to Writing	HC	303	TTH	09:30AM - 10:50AM	Rachel Clevenger	1.00
EH 102 F	7108	Introduction to Writing	HC	317	TTH	09:30AM - 10:50AM	Tynes Cowan	1.00
EH 208 A	7120	Intermediate Writing	HC	319	TTH	09:30AM - 10:50AM	Clare Clifford	1.00
EH 210 A	7124	Introduction to Fiction	O	101	TTH	09:30AM - 10:50AM	David Ullrich	1.00
EH 212 A-1Y	7127	Intro to Science Fiction	HC	005	TTH	09:30AM - 10:20AM	Kent Andersen	1.00
EH 230 A	7135	Plural America I	HC	315	TTH	09:30AM - 10:50AM	Sprayberry/Nicholas	1.00
EPY 223 A	7310	Human Growth and Development	HB	102	TTH	09:30AM - 10:50AM	Kelly Russell	1.00
EPY 223L 1	7311	Hum Growth & Dev - A-Lab	DHAR	DHAR	LAB		Kelly Russell	0.00
ES 150 A	7048	Intro Environmental Studies	SSC	334	TTH	09:30AM - 10:50AM	Scot Duncan	1.00
ES 150L 1	7050	Intro Envir Stud Lab	SSC	105	LAB TH	12:30PM - 03:20PM	Scot Duncan	0.00
HI 230 A	7097	Plural America I	HC	315	TTH	09:30AM - 10:50AM	Nicholas/Sprayberry	1.00
HI 346 A	7096	Russia in the 20th Century	HC	003	TTH	09:30AM - 10:50AM	Randy Law	1.00
HON 230 A	7136	Plural America I	HC	315	TTH	09:30AM - 10:50AM	Nicholas/Sprayberry	1.00
MA 150 D	6976	Intro to Mathematical Modeling	O	104	TTH	09:30AM - 10:50AM	Jeffrey Barton	1.00
MU 124 A	7233	Music in Live Performance	H	117	TTH	09:30AM - 10:50AM	Michael Huebner	1.00
MU 155 A	7243	Advanced Ear Training I	H	106	TTH	09:30AM - 10:50AM	Neal Matherne	0.25
MU 159 A	7244	Beginning Keyboard Harmony I	H	122	TTH	09:30AM - 10:50AM	Adam Bowles	0.25
PH 121 A	6915	General Physics I	SSC	130	TTH	09:30AM - 10:50AM	Mark Rupright	1.00
PH 121L 1	6917	General Physics I Lab	SSC	115	LAB T	12:30PM - 03:20PM	Duane H. Pontius, Sr	0.00
PH 121L 2	6918	General Physics I Lab	SSC	115	LAB W	02:00PM - 04:50PM	Duane H. Pontius, Sr	0.00
PH 121L 3	6919	General Physics I Lab	SSC	115	LAB TH	12:30PM - 03:20PM	Duane H. Pontius, Sr	0.00
PH 121T 1	6916	Gen Physics Tutorial	SSC	130	MF	02:00PM - 03:20PM	Mark Rupright	0.00
PH 303 A	6923	Optical Physics	SSC	238	TTH	09:30AM - 10:50AM	Duane H. Pontius, Jr	1.00
PH 303L 1	6924	Optical Physics Lab	DHAR	DHAR	LAB		Duane H. Pontius, Jr	0.00
PL 241 A	7062	Logic	M	311	TTH	09:30AM - 10:50AM	Bill Myers	1.00
PL 250 A	7057	Contemporary Philosophy	HC	213	TTH	09:30AM - 10:50AM	Steve Hendley	1.00
PS 195 A-1Y	6897	Pol, Media, and Pol Culture	HB	327	TTH	09:30AM - 10:50AM	Natalie Davis	1.00
PS 204 A	6898	Survey Data Anal. & Stats.	HB	328	TTH	09:30AM - 10:50AM	Dalto/Rossmann	1.00
PS 204L 1	7395	Survey Data Anal & Stats Lab	HB	301	LAB TH	02:00PM - 03:20PM	Dalto/Rossmann	0.00
PS 250 A	6906	The Public Policy Process	HC	112	TTH	09:30AM - 10:50AM	Ed LaMonte	1.00
PY 101 A	6891	Introduction to Psychology	O	102	TTH	09:30AM - 10:50AM	Richard Rector	1.00
PY 204 A	6901	Statistics for Research	HB	329	TTH	09:30AM - 10:50AM	Rick McCallum	1.00
PY 204L 1	6928	Research Lab	HB	301	LAB T	02:30PM - 03:30PM	Rick McCallum	0.00
PY 204L 2	6929	Research Lab	HB	301	LAB T	03:30PM - 04:30PM	Rick McCallum	0.00
PY 205 B-1Y	7479	Intro to Forensic Psychology	HB	325	TTH	09:30AM - 10:50AM	Tricia Witte	1.00
PY 407 A	6936	Cognitive Psychology	SSC	336	TTH	09:30AM - 10:50AM	Shane Pitts	1.00
PY 407L 1	6937	Cognitive Psych Lab	HB	301	LAB W	02:00PM - 03:20PM	Shane Pitts	0.00

PY 407L 2	6938	Cognitive Psych Lab	HB	301	LAB W	03:30PM - 04:50PM	Shane Pitts	0.00
PY 408 A	6939	Psychology of Learning	SSC	134	TTH	09:30AM - 10:50AM	Lynne Trench	1.00
PY 408L 1	6940	Psychology of Learning Lab	SSC	007	LAB T	02:00PM - 03:20PM	Lynne Trench	0.00
PY 408L 2	6941	Psychology of Learning Lab	SSC	007	LAB W	03:30PM - 04:50PM	Lynne Trench	0.00
RE 315 A	7074	Contemporary Christian Theolog	HC	007	TTH	09:30AM - 10:50AM	Lawrence Brasher	1.00
RE 370 A	7066	Spec Topics: Parables of Jesus	SSC	138	TTH	09:30AM - 10:50AM	Bishop Robert Morgan	1.00
SN 300 A	6956	Advanced Conversation	HC	215	TTH	09:30AM - 10:50AM	Barbara Domcekova	1.00
SO 204 A	7006	Survey Data Anal. and Stats.	HB	328	TTH	09:30AM - 10:50AM	Dalto/Rossmann	1.00
SO 204L 1	7010	Survey Data Anal & Stats Lab	HB	301	LAB TH	02:00PM - 03:20PM	Dalto/Rossmann	0.00
THA 111 A	7024	Make-up	TH	DHAR	TTH	09:30AM - 10:50AM	Matthew Mielke	0.50

T,TH 12:30 - 1:50/3:20

AC 222 A	7177	Accounting II	HB	202	TTH	12:30PM - 01:50PM	Tara Sudderth	1.00
AR 301 A	7156	Printmaking I	AR	9	TTH	12:30PM - 03:20PM	Kevin Shook	1.00
AR 302 A	7158	Printmaking II	AR	9	TTH	12:30PM - 03:20PM	Kevin Shook	1.00
AR 303 A	7160	Printmaking III	AR	9	TTH	12:30PM - 03:20PM	Kevin Shook	1.00
ARH 215 B	7147	Survey of Art History I	AR	10	TTH	12:30PM - 01:50PM	Timothy Smith	1.00
BA 350 B	7202	Principles of Marketing	HB	228	TTH	12:30PM - 01:50PM	Jack Taylor	1.00
CS 250 A	6966	Advanced Programming	O	205	LEC TTH	12:30PM - 01:50PM	Richard Turner	1.00
			O	201	LAB TTH	12:30PM - 01:50PM		
EC 202 A	7187	Principles of Economics II	HB	225	TTH	12:30PM - 01:50PM	Kathleen Rossmann	1.00
ED 111 A	7279	Golf I	STRP	STRP	T	12:30PM - 01:50PM	Duane Reboul	0.25
ED 112 A	7281	Golf II	STRP	STRP	TH	12:30PM - 01:50PM	Duane Reboul	0.25
ED 470 A	7353	Seminar in Teaching Technology	HB	126	TTH	12:30PM - 01:50PM	Eileen Moore	1.00
ED 470L 1	7355	Seminar in Teaching Lab	DHAR	DHAR	LAB		Eileen Moore	0.00
EH 102 H	7110	Introduction to Writing	HC	218	TTH	12:30PM - 01:50PM	Jane Archer	1.00
EH 102 J	7112	Introduction to Writing	HC	005	TTH	12:30PM - 01:50PM	Rachel Clevenger	1.00
EH 208 B	7122	Intermediate Writing	HC	303	TTH	12:30PM - 01:50PM	Kent Andersen	1.00
EH 220 A-1Y	7129	Lit and the Social Experience	HC	315	TTH	12:30PM - 01:50PM	Tynes Cowan	1.00
EH 420 A	7162	Studies in the Drama (Cat.5)	HC	317	TTH	12:30PM - 01:50PM	John Tatter	1.00
HI 320 A	7098	America Since 1940	HC	319	TTH	12:30PM - 01:50PM	Bill Nicholas	1.00
HON 222 A	7133	Frankenstein Meets Snow White	O	101	TTH	12:30PM - 01:50PM	Cox/Ullrich	1.00
MA 150 B-1Y	6974	Intro to Mathematical Modeling	O	104	TTH	12:30PM - 01:50PM	Jeffrey Barton	1.00
MA 250 A-1Y	6986	Mathematical Modeling	O	105	TTH	12:30PM - 01:50PM	Doug Riley	1.00
MU 243 A	7253	Diction for Singers	H	117	TTH	12:30PM - 01:50PM	J. Leary-Warsaw	0.50
MU 355 A	7258	Composition	H	102	TTH	12:30PM - 01:50PM	Charles Mason	0.50
PS 368 A	7408	Political Violence	HB	DHAR	TTH	12:30PM - 01:50PM	Vincent Gawronski	1.00
PY 101 G	7482	Introduction to Psychology	SSC	134	TTH	12:30PM - 01:50PM	Lynne Trench	1.00
PY 204 B	6905	Statistics for Research	HB	329	TTH	12:30PM - 01:50PM	Rick McCallum	1.00
PY 204L 1	6928	Research Lab	HB	301	LAB T	02:30PM - 03:30PM	Rick McCallum	0.00
PY 204L 2	6929	Research Lab	HB	301	LAB T	03:30PM - 04:30PM	Rick McCallum	0.00
PY 205 A-1Y	6930	Intro to Forensic Psychology	HB	328	TTH	12:30PM - 01:50PM	Tricia Witte	1.00
PY 206 B	7494	Why People Believe Wierd Thing	HB	325	TTH	12:30PM - 01:50PM	Shane Pitts	1.00
PY 313 A	6935	Psychological Disorders	HB	327	TTH	12:30PM - 01:50PM	Heather Meggers-Wrig ht	1.00
RE 215 A	7077	New Testament	HC	213	TTH	12:30PM - 01:50PM	Amy Cottrill	1.00
RE 340 A	7068	The Pauline Writings	SSC	138	TTH	12:30PM - 01:50PM	Bishop Robert Morgan	1.00

T,TH 2:00 - 3:20

AC 444 A	7447	Acctg Inf Sys & Stat Aud Tech	HB	202	TTH	02:00PM - 03:20PM	Susan Cockrell	1.00
BA 475 A	7218	Adv and Intl Marketing	HB	227	TTH	02:00PM - 03:20PM	Stephen Craft	1.00
CL 211 A	7508	Mythology	HC	317	TTH	02:00PM - 03:20PM	Sam Pezzillo	1.00
CS 171 A-1Y	6965	Computers and the Mind's Eye	O	205	LEC TTH	02:00PM - 03:20PM	Marietta Cameron	1.00
			O	201	LAB TTH	02:00PM - 03:20PM		
DA 350 A	7219	Dance History I	ST	2	TTH	02:00PM - 03:20PM	Ruth Henry	1.00
EH 102 I	7111	Introduction to Writing	O	101	TTH	02:00PM - 03:20PM	David Ullrich	1.00
EH 102 K	7114	Introduction to Writing	HC	005	TTH	02:00PM - 03:20PM	Rachel Clevenger	1.00
EH 102 M	7520	Introduction to Writing	HC	007	TTH	02:00PM - 03:20PM	Clare Clifford	1.00
EH 249 A	7137	Lit and the Visual Arts	HC	315	TTH	02:00PM - 03:20PM	Susan Hagen	1.00
EH 390 A	7159	20 Cent Brit & Am Poet(Cat.1)	HC	303	TTH	02:00PM - 03:20PM	Sandra Sprayberry	1.00
EPY 320 A	7337	Educational Psychology	HB	102	TTH	02:00PM - 03:20PM	Carol Standifer	1.00
EPY 320L 1	7338	Educational Psych - Lab	DHAR	DHAR	LAB		Carol Standifer	0.00
GN 270 A	7489	Gesprachsdeutsch	HC	003	TTH	02:00PM - 03:20PM	Judith Cox	1.00
HI 287 A	7099	Western Images of Asia	HC	215	TTH	02:00PM - 03:20PM	Matthew Levey	1.00
HON 249 A	7249	Lit and the Visual Arts	HC	315	TTH	02:00PM - 03:20PM	Susan Hagen	1.00
HON 301 A	7398	Who Is Jesus?	SSC	138	TTH	02:00PM - 03:20PM	Willimon/Blackerby	1.00
MA 124 A	6972	Precalculus Mathematics	O	102	TTH	02:00PM - 03:20PM	(STAFF)	1.00
MU 126 A-1Y	7237	Music of the World's People	H	117	TTH	02:00PM - 03:20PM	James Cook	1.00
MU 427 A	7260	Choral Literature	H	106	TTH	02:00PM - 03:20PM	Lester Seigel	0.50
PL 361 A	7064	Topics in Phil of Religion	HC	004	TTH	02:00PM - 03:20PM	Bill Myers	1.00
PY 101 D	6896	Introduction to Psychology	HB	327	TTH	02:00PM - 03:20PM	Terry Goodrick	1.00
PY 206 A	6931	Why People Believe Weird Thing	HB	325	TTH	02:00PM - 03:20PM	Shane Pitts	1.00
SO 370 A	7016	Sociology of Medicine	HB	329	TTH	02:00PM - 03:20PM	Alicia Weaver	1.00
SP 101 A	7034	Introduction to Speech	HC	112	TTH	02:00PM - 03:20PM	Julia Matson	1.00

Monday – Friday Five-day- a-week classes

M-F misc.

DA 210 A	7214	Student Choreography Workshop	ST	C	MTWTHF	03:30PM - 10:00PM	Henry/Popovich	0.25
DA 301 A	7216	Intermediate Ballet Tech	ST	C	MTWTHF	12:30PM - 01:50PM	Ruth Henry	1.00
DA 401 A	7220	Advanced Ballet Technique	ST	C	MTWTHF	09:30AM - 10:50AM	Mira Popovich	1.00
FR 101 A	6925	Elementary French I	M	310	MTWTHF	09:30AM - 10:25AM	Margaret King	1.00
FR 101 B	6926	Elementary French I	HC	112	MTWTHF	12:30PM - 01:25PM	Margaret King	1.00
FR 201 A	6927	Fund of French Grammar	HC	319	MTWTHF	02:00PM - 02:55PM	Renee Norrell	1.00
GN 101 A	6958	Elementary German I	HC	218	MTWTHF	09:30AM - 10:25AM	Judith Cox	1.00
SN 101 A	6948	Elementary Spanish I	HC	010	MTWTHF	08:00AM - 08:55AM	Kim Lewis	1.00
SN 201 A	6949	Fund of Spanish Grammar	HC	215	MTWTHF	08:00AM - 08:55AM	Barbara Domcekova	1.00
SN 201 B	6950	Fund of Spanish Grammar	HC	010	MTWTHF	09:30AM - 10:25AM	Kim Lewis	1.00
SN 201 C	6951	Fund of Spanish Grammar	HC	003	MTWTHF	12:30PM - 01:25PM	J. Ramos de Harthun	1.00
SN 201 D	6952	Fund of Spanish Grammar	HC	010	MTWTHF	12:30PM - 01:25PM	Kim Lewis	1.00
SN 201 E	6953	Fund of Spanish Grammar	HC	213	MTWTHF	02:00PM - 02:55PM	Kim Lewis	1.00
SN 201 F	7406	Fund of Spanish Grammar	HC	007	MTWTHF	12:30PM - 01:25PM	Barbara Domcekova	1.00

CLASSES 4:00 PM AND AFTER

IS 101 A	6913	Pre-Depart Topics Study Abroad	HB	304	M	04:50PM - 06:20PM	Anne Ledvina	0.50
IS 101 B	6914	Pre-Depart Topics Study Abroad	HB	304	M	04:50PM - 06:20PM	Anne Ledvina	0.25
LS 400 A	6961	Capstone Sr Leadership Sem	O	202	TH	04:00PM - 05:20PM	Jeanne L. Jackson	0.50
MU 217 A	7251	Jazz Band	H	104	M	06:30PM - 08:30PM	Ron Hooten	0.25

MISC. TIMES

BA 415 A	7213	Investment Management	HB	228	T	02:00PM - 03:20PM	Sara Robicheaux	0.50
BI 470 A	7092	Directed Research	SSC	334	T	12:30PM - 03:20PM	Pamela Hanson	1.00
BI 470 B	7093	Directed Research	SSC	334	W	02:00PM - 04:50PM	Leo Pezzementi	1.00
DA 203 A	7405	Modern Dance	ST	1	MWF	03:30PM - 04:30PM	Teri Weksler	0.25
HON 207 A	6908	Civil Rights and Justice	HB	328	M	02:00PM - 04:50PM	Ed LaMonte	1.00
MU 112 A	7230	Southern Chorale	H	RECI	TTH	03:30PM - 05:00PM	David Smith	0.25
MU 142 A	7239	New Music Ensemble	H	104	MF	03:30PM - 04:50PM	Craig Hultgren	0.25
MU 211 A	7396	Concert Choir	H	123	TTH	03:30PM - 04:50PM	Lester Seigel	0.25
			H	123	M	05:00PM - 06:20PM		
MU 215 A	7250	Wind Ensemble	H	104	TTH	03:30PM - 05:30PM	Ron Hooten	0.25
PS 307 A	6907	Civil Rights and Justice	HB	328	M	02:00PM - 04:50PM	Ed LaMonte	1.00
PS 340 A	6909	Comparative Elite Behavior	HB	327	TTH	03:30PM - 04:50PM	Natalie Davis	1.00
PS 470 A	6910	Seminar for Majors	HB	327	M	02:00PM - 04:50PM	Natalie Davis	1.00

DHAR (Days and hours to be arranged) CLASSES

BI 472 A	7100	Directed Research	DHAR	DHAR			Scot Duncan	1.00
BI 472 B	7101	Directed Research	DHAR	DHAR			Andrew Gannon	1.00
BI 472 D	7104	Directed Research	DHAR	DHAR			Pamela Hanson	1.00
BI 472 E	7113	Directed Research	DHAR	DHAR			Leo Pezzementi	1.00
BI 472 F	7116	Directed Research	DHAR	DHAR			Gretchen Repasky	1.00
BI 472 G	7121	Directed Research	DHAR	DHAR			Jeanette Runquist	1.00
BI 472 H	7123	Directed Research	DHAR	DHAR			Wayne Shew	1.00
BI 472 I	7126	Directed Research	DHAR	DHAR			Peter Van Zandt	1.00
CH 401 A	7013	Senior Seminar in Chemistry	DHAR	DHAR			Scott Dorman	0.50
CH 410 A	7018	Senior Research in Chemistry	DHAR	DHAR			Scott Dorman	1.00
CH 410 B	7020	Senior Research in Chemistry	DHAR	DHAR			David Schedler	1.00
CH 410 C	7021	Senior Research in Chemistry	DHAR	DHAR			Clyde Stanton	1.00
CH 410 D	7023	Senior Research in Chemistry	DHAR	DHAR			Laura Stultz	1.00
ED 410 A	7349	Internship II	DHAR	DHAR			G. McCorquodale	1.50
ED 411 A	7351	Internship III	DHAR	DHAR			G. McCorquodale	1.50
ED 471 A	7356	Education Seminar	DHAR	DHAR			Clint E. Bruess	1.00
HON 393 A	7409	Independent Study	DHAR	DHAR			Susan Hagen	0.50
HON 493 A	7247	Honors Project	DHAR	DHAR			Susan Hagen	0.50
HON 493 B	7248	Honors Project	DHAR	DHAR			Susan Hagen	1.00
MED 331 A	7223	Elementary School Music Method	H	104			Ron Hooten	1.00
MED 335 A	7224	Secondary School Music Methods	H	104			Ron Hooten	1.00
MED 341 A	7225	Teaching Strings	H	DHAR			Ron Hooten	0.25
MED 343 A	7226	Teaching Woodwinds	H	DHAR			Jack Sharp	0.25
MED 414 A	7227	Teaching Internship VI	H	DHAR			Ron Hooten	1.25
MED 415 A	7228	Teaching Internship VII	H	DHAR			Ron Hooten	1.25
MED 436 A	7229	Piano Pedagogy II	H	DHAR			Constance Moore	0.25
MS 110 A	7267	Piano	H	DHAR			William DeVan	0.25
MS 110 B	7268	Piano	H	DHAR			Constance Moore	0.25

MS 110 C	7269	Piano	H	DHAR	Ellen Tweiten	0.25
MS 110 D	7270	Piano	H	DHAR	Virginia Dismukes	0.25
MS 110 Z	7271	Piano	H	DHAR	(STAFF)	0.25
MS 120 A	7272	Voice	H	DHAR	Mildred Allen	0.25
MS 120 B	7273	Voice	H	DHAR	J. Leary-Warsaw	0.25
MS 120 C	7274	Voice	H	DHAR	David Smith	0.25
MS 120 D	7275	Voice	H	DHAR	Jan K. Hill	0.25
MS 120 E	7276	Voice	H	DHAR	Angela Horn-Barrett	0.25
MS 120 F	7277	Voice	H	DHAR	William Martin	0.25
MS 130 A	7278	Organ	H	DHAR	James Cook	0.25
MS 140 A	7280	Violin	H	DHAR	Anne Pandolfi	0.25
MS 140 B	7282	Viola	H	DHAR	(STAFF)	0.25
MS 140 C	7283	Cello	H	DHAR	Craig Hultgren	0.25
MS 140 D	7285	String Bass	H	DHAR	(STAFF)	0.25
MS 150 A	7286	Flute	H	DHAR	Lisa Bartlett	0.25
MS 150 B	7288	Oboe	H	DHAR	(STAFF)	0.25
MS 150 C	7290	Clarinet	H	DHAR	Judy Donaldson	0.25
MS 150 D	7291	Bassoon	H	DHAR	Jack Sharp	0.25
MS 150 E	7293	Saxophone	H	DHAR	Jack Sharp	0.25
MS 150 F1	7294	French Horn	H	DHAR	Steve Harrington	0.25
MS 150 F2	7400	French Horn	H	DHAR	Dave Pandolfi	0.25
MS 150 G	7296	Trumpet	H	DHAR	Paul Jackson	0.25
MS 150 H	7297	Trombone	H	DHAR	Jay Evans	0.25
MS 150 I	7298	Tuba	H	DHAR	(STAFF)	0.25
MS 150 J	7299	Orchestral Winds/Others	H	DHAR	(STAFF)	0.25
MS 150 K1	7300	Percussion	H	DHAR	Bill Williams	0.25
MS 150 K2	7301	Percussion	H	DHAR	(STAFF)	0.25
MS 160 A	7302	Classical Guitar	H	108	Karlo Senasi	0.25
MS 310 A	7303	Piano	H	DHAR	William DeVan	0.50
MS 310 B	7305	Piano	H	DHAR	Constance Moore	0.50
MS 310 C	7307	Piano	H	DHAR	Ellen Tweiten	0.50
MS 310 D	7309	Piano	H	DHAR	Virginia Dismukes	0.50
MS 310 Z	7312	Piano	H	DHAR	(STAFF)	0.50
MS 320 A	7313	Voice	H	DHAR	Mildred Allen	0.50
MS 320 B	7315	Voice	H	DHAR	J. Leary-Warsaw	0.50
MS 320 C	7316	Voice	H	DHAR	David Smith	0.50
MS 320 D	7318	Voice	H	DHAR	Jan K. Hill	0.50
MS 320 E	7320	Voice	H	DHAR	Angela Horn-Barrett	0.50
MS 320 F	7321	Voice	H	DHAR	William Martin	0.50
MS 330 A	7323	Organ	H	DHAR	James Cook	0.50
MS 340 A	7325	Violin	H	DHAR	Anne Pandolfi	0.50
MS 340 B	7327	Viola	H	DHAR	(STAFF)	0.50
MS 340 C	7328	Cello	H	DHAR	Craig Hultgren	0.50
MS 340 D	7330	String Bass	H	DHAR	(STAFF)	0.50
MS 350 A	7332	Flute	H	DHAR	Lisa Bartlett	0.50
MS 350 B	7333	Oboe	H	DHAR	(STAFF)	0.50
MS 350 C	7335	Clarinet	H	DHAR	Judy Donaldson	0.50
MS 350 D	7350	Bassoon	H	DHAR	Jack Sharp	0.50
MS 350 E	7352	Saxophone	H	DHAR	Jack Sharp	0.50
MS 350 F1	7354	French Horn	H	DHAR	Steve Harrington	0.50
MS 350 F2	7402	French Horn	H	DHAR	Dave Pandolfi	0.50
MS 350 G	7357	Trumpet	H	DHAR	Paul Jackson	0.50
MS 350 H	7358	Trombone	H	DHAR	Jay Evans	0.50
MS 350 I	7359	Tuba	H	DHAR	(STAFF)	0.50
MS 350 J	7360	Orchestral Winds/Other	H	DHAR	(STAFF)	0.50
MS 350 K1	7361	Percussion	H	DHAR	Bill Williams	0.50
MS 350 K2	7362	Percussion	H	DHAR	(STAFF)	0.50
MS 360 A	7363	Classical Guitar	H	108	Karlo Senasi	0.50
MS 410 A	7364	Piano	H	DHAR	William DeVan	1.00
MS 410 B	7397	Piano	H	DHAR	Constance Moore	1.00
MS 410 C	7366	Piano	H	DHAR	Ellen Tweiten	1.00
MS 410 D	7367	Piano	H	DHAR	Virginia Dismukes	1.00
MS 420 A	7369	Voice	H	DHAR	Mildred Allen	1.00
MS 420 B	7370	Voice	H	DHAR	J. Leary-Warsaw	1.00
MS 420 C	7371	Voice	H	DHAR	David Smith	1.00
MS 420 D	7528	Voice	H	DHAR	Angela Horn-Barrett	1.00
MS 430 A	7375	Organ	H	DHAR	James Cook	1.00
MS 440 A	7377	Violin	H	DHAR	Anne Pandolfi	1.00
MS 440 B	7378	Viola	H	DHAR	(STAFF)	1.00
MS 440 C	7379	Cello	H	DHAR	Craig Hultgren	1.00
MS 440 D	7380	String Bass	H	DHAR	(STAFF)	1.00
MS 450 A	7381	Flute	H	DHAR	Lisa Bartlett	1.00
MS 450 B	7382	Oboe	H	DHAR	(STAFF)	1.00
MS 450 C	7383	Clarinet	H	DHAR	Judy Donaldson	1.00
MS 450 D	7384	Bassoon	H	DHAR	Jack Sharp	1.00
MS 450 E	7385	Saxophone	H	DHAR	Jack Sharp	1.00
MS 450 F1	7386	French Horn	H	DHAR	Steve Harrington	1.00
MS 450 F2	7403	French Horn	DHAR	DHAR	Dave Pandolfi	1.00
MS 450 G	7387	Trumpet	H	DHAR	Paul Jackson	1.00

MS 450 H	7388	Trombone	H	DHAR	Jay Evans	1.00
MS 450 I	7389	Tuba	H	DHAR	(STAFF)	1.00
MS 450 J	7390	Orchestral Winds/Other	H	DHAR	(STAFF)	1.00
MS 450 K1	7391	Percussion	H	DHAR	Bill Williams	1.00
MS 450 K2	7392	Percussion	H	DHAR	(STAFF)	1.00
MS 460 A	7393	Classical Guitar	H	108	Karlo Senasi	1.00
MU 113 A	7231	Chamber Orchestra	H	DHAR	Mark Ridings	0.25
MU 341 A	7256	Ensemble	H	123	(STAFF)	0.25
MU 343 A	7257	Accompanying	H	DHAR	Adam Bowles	0.25
MU 455 A	7262	Advanced Composition	H	DHAR	Charles Mason	1.00
THA 101 A	7019	Theatre Practicum	TH	DHAR	Litsey/Mielke	0.25
THA 102 A	7022	Theatre Practicum	TH	DHAR	Litsey/Mielke	0.50
THA 201 A	7041	Theatre Practicum	TH	DHAR	Litsey/Mielke	0.25
THA 202 A	7043	Theatre Practicum	TH	DHAR	Litsey/Mielke	0.50
THA 210 A	7045	Technical Workshop	TH	DHAR	Matthew Mielke	0.50
THA 301 A	7049	Theatre Praticum	TH	DHAR	Litsey/Mielke	0.25
THA 302 A	7051	Theatre Praticum	TH	DHAR	Litsey/Mielke	0.50
THA 401 A	7052	Theatre Practicum	TH	DHAR	Litsey/Mielke	0.25
THA 402 A	7053	Theatre Praticum	TH	DHAR	Litsey/Mielke	0.50

Master of Music Courses

Dept Sec.... Syn. Short Title..... Formatted Name..... Cred.

MS 510 AM	7368	Piano			William DeVan	1.00
MS 520 AM	7372	Voice			Mildred Allen	1.00
MS 520 BM	7373	Voice			J. Leary-Warsaw	1.00
MS 520 CM	7374	Voice			David Smith	1.00
MS 530 AM	7376	Organ			James Cook	1.00
MU 501 AM	7263	Mat & Meth for Grad Research			James Cook	1.00
MU 521 AM	7264	Spec Topics in Mus His & Lit			(STAFF)	1.00
MU 551 AM	7265	Spec Topics in Comp & Analysis			(STAFF)	1.00
MU 555 AM	7266	Composition - Graduate			Charles Mason	1.00
MU 555 BM	7524	Composition - Graduate			Dorothy Hindman	1.00

CLASS SCHEDULE, FALL 2007 (SORTED BY COURSE)

Course.....	Syn.	Short Title.....	Bldg	Room	Mth	Days..	Times.....	Formatted Name.....	Cred.
AC 221 A	7174	Accounting I	HB	228		WF	08:00AM - 09:20AM	Tara Sudderth	1.00
AC 221 B	7175	Accounting I	HB	328		MW	09:30AM - 10:50AM	Tara Sudderth	1.00
AC 221 C	7176	Accounting I	HB	225		MW	11:00AM - 12:20PM	Ron Stunda	1.00
AC 222 A	7177	Accounting II	HB	202		TTH	12:30PM - 01:50PM	Tara Sudderth	1.00
AC 321 A	7178	Intermediate Accounting I	HB	225		MW	12:30PM - 01:50PM	Ron Stunda	1.00
AC 324 A	7179	Cost Accounting	HB	225		MW	02:00PM - 03:20PM	Ron Stunda	1.00
AC 341 A	7180	Income Tax I	HB	202		TTH	09:30AM - 10:50AM	Tara Sudderth	1.00
AC 361 A	7181	Business Law I	HB	225		MWF	09:30AM - 10:30AM	Bill Leland	1.00
AC 421 A	7183	Auditing	HB	202		MW	02:00PM - 03:20PM	Susan Cockrell	1.00
AC 444 A	7447	Acctg Inf Sys & Stat Aud Tech	HB	202		TTH	02:00PM - 03:20PM	Susan Cockrell	1.00
AR 100 A-1Y	7128	First Exper in Studio Art	PA	227		MW	08:00AM - 09:20AM	Pamela Venz	1.00
AR 101 A	7139	Basic Painting	AR	6		MWF	09:30AM - 10:30AM	Bud Spivey	1.00
AR 102 A	7130	Basic Design	AR	7		MW	08:00AM - 09:20AM	Johnny Goodwin	1.00
AR 102 B	7446	Basic Design	PA	125		MWF	11:00AM - 12:00PM	Bud Spivey	1.00
AR 103 A	7142	Basic Photography	PA	126		MW	11:00AM - 12:20PM	Pamela Venz	1.00
AR 104 A	7132	Basic Drawing	AR	7		TTH	09:30AM - 10:50AM	Steve Cole	1.00
AR 111 A	7140	Two-Dimensional Design	PA	227		MW	09:30AM - 10:50AM	Kevin Shook	1.00
AR 111 B	7141	Two-Dimensional Design	PA	227		TTH	09:30AM - 10:50AM	Kevin Shook	1.00
AR 112 A	7143	Three-Dimensional Design	PA	227		MWF	11:00AM - 12:00PM	Jim Neel	1.00
AR 150 A	7145	Drawing I	AR	7		MWF	09:30AM - 10:30AM	Jim Neel	1.00
AR 220 A	7149	International Film I	AR	10		MW	02:00PM - 04:50PM	Robert Shelton	1.00
AR 250 A	7152	Drawing II	AR	7		MW	11:00AM - 12:20PM	Steve Cole	1.00
AR 301 A	7156	Printmaking I	AR	9		TTH	12:30PM - 03:20PM	Kevin Shook	1.00
AR 302 A	7158	Printmaking II	AR	9		TTH	12:30PM - 03:20PM	Kevin Shook	1.00
AR 303 A	7160	Printmaking III	AR	9		TTH	12:30PM - 03:20PM	Kevin Shook	1.00
AR 306 A	7163	Painting I	AR	6		MW	02:00PM - 04:50PM	Steve Cole	1.00
AR 307 A	7165	Painting II	AR	6		MW	02:00PM - 04:50PM	Steve Cole	1.00

AR 308 A	7166	Painting III	AR	6	MW	02:00PM - 04:50PM	Steve Cole	1.00
AR 311 A	7167	Sculpture I	AR	8	MW	02:00PM - 04:50PM	Jim Neel	1.00
AR 312 A	7168	Sculpture II	AR	8	MW	02:00PM - 04:50PM	Jim Neel	1.00
AR 313 A	7169	Sculpture III	AR	8	MW	02:00PM - 04:50PM	Jim Neel	1.00
AR 321 A	7170	Photography I	PA	126	TTH	08:00AM - 10:50AM	Pamela Venz	1.00
AR 322 A	7171	Photography II	PA	126	TTH	08:00AM - 10:50AM	Pamela Venz	1.00
AR 323 A	7172	Photography III	PA	126	TTH	08:00AM - 10:50AM	Pamela Venz	1.00
AR 471 A	7154	Senior Studio I	AR	12	WF	12:30PM - 01:50PM	Bud Spivey	1.00
ARH 114 A	7144	Introduction to Art Issues	AR	10	MW	11:00AM - 12:20PM	Kathleen Spies	1.00
ARH 215 A	7146	Survey of Art History I	AR	10	TTH	09:30AM - 10:50AM	Timothy Smith	1.00
ARH 215 B	7147	Survey of Art History I	AR	10	TTH	12:30PM - 01:50PM	Timothy Smith	1.00
ARH 216 A	7148	Survey of Art History II	AR	10	MW	09:30AM - 10:50AM	Kathleen Spies	1.00
ARH 311 A	7234	Roman Art	AR	12	MW	12:30PM - 01:50PM	Timothy Smith	1.00
ARH 415 A	7173	19th Century Art	AR	12	TTH	09:30AM - 10:50AM	Kathleen Spies	1.00
AS 101 A	6920	General Astronomy	SSC	130	MWF	11:00AM - 12:00PM	Mark Rupright	1.00
AS 101L 1	6921	General Astronomy Lab	SSC	111	LAB T	07:00PM - 09:50PM	Mark Rupright	0.00
AS 101L 2	7456	General Astronomy Lab	SSC	111	LAB TH	07:00PM - 09:50PM	Duane H. Pontius, Jr	0.00
BA 201 A	7193	Foundations of Bus Thought	HB	227	TTH	09:30AM - 10:50AM	Stephen Craft	1.00
BA 201 B-1Y	7195	Foundations of Bus Thought	HB	227	MW	09:30AM - 10:50AM	Byron Chew	1.00
BA 201 C-1Y	7197	Foundations of Bus Thought	HB	227	MW	11:00AM - 12:20PM	Byron Chew	1.00
BA 311 A	7196	Quant Analy for Busi and Econ	HB	202	WF	08:00AM - 09:20AM	Bert Morrow	1.00
BA 320 A	7198	Principles of Management	HB	202	WF	09:30AM - 10:50AM	Bert Morrow	1.00
BA 320 B	7200	Principles of Management	HB	227	WF	12:30PM - 01:50PM	Bill Hamer	1.00
BA 350 B	7202	Principles of Marketing	HB	228	TTH	12:30PM - 01:50PM	Jack Taylor	1.00
BA 363 A	7203	Legal Env of Intnl Business	HB	228	TTH	09:30AM - 10:50AM	Jack Taylor	1.00
BA 372 A	7205	Principles of Finance I	HB	228	MWF	09:30AM - 10:30AM	Sara Robicheaux	1.00
BA 372 B	7210	Principles of Finance I	HB	228	MWF	11:00AM - 12:00PM	Sara Robicheaux	1.00
BA 372L 1	7208	Prin of Finance I Lab	DHAR	DHAR	LAB		Sara Robicheaux	0.00
BA 400 A	7211	Intnl Strategic Issues	HB	227	MW	08:00AM - 09:20AM	Byron Chew	1.00
BA 415 A	7213	Investment Management	HB	228	T	02:00PM - 03:20PM	Sara Robicheaux	0.50
BA 474 A	7215	Adv and Intnl Fin Mgnt	HB	228	MW	02:00PM - 03:20PM	Sara Robicheaux	1.00
BA 475 A	7218	Adv and Intnl Marketing	HB	227	TTH	02:00PM - 03:20PM	Stephen Craft	1.00
BI 101 A	7025	Explorations in Biology	SSC	134	TTH	08:00AM - 09:20AM	Peter Van Zandt	1.00
BI 101L 1	7026	Explorations in Biol Lab	SSC	101	LAB T	12:30PM - 03:20PM	Peter Van Zandt	0.00
BI 101L 2	7028	Explorations in Biol Lab	SSC	101	LAB W	02:00PM - 04:50PM	Peter Van Zandt	0.00
BI 101L 3	7483	Explorations in Biol Lab	SSC	101	LAB TH	12:30PM - 03:20PM	(STAFF)	0.00
BI 115 A	7029	Organismal Biology	SSC	138	MWF	09:30AM - 10:30AM	Andrew Gannon	1.00
BI 115 B	7030	Organismal Biology	SSC	138	MWF	12:30PM - 01:30PM	Andrew Gannon	1.00
BI 115L 1	7031	Organismal Biology Lab	SSC	106	LAB M	02:00PM - 04:50PM	Andrew Gannon	0.00
BI 115L 2	7033	Organismal Biology Lab	SSC	106	LAB T	08:00AM - 10:50AM	Andrew Gannon	0.00
BI 115L 3	7036	Organismal Biology Lab	SSC	106	LAB T	12:30PM - 03:20PM	Jenny Estes	0.00
BI 115L 4	7038	Organismal Biology Lab	SSC	106	LAB W	02:00PM - 04:50PM	Brenda Hammer	0.00
BI 115L 5	7039	Organismal Biology Lab	SSC	106	LAB TH	08:00AM - 10:50AM	Natalie Warren	0.00
BI 115L 6	7040	Organismal Biology Lab	SSC	106	LAB TH	12:30PM - 03:20PM	Natalie Warren	0.00
BI 125 A	7042	Cellular & Molecular Biology	SSC	138	MWF	08:00AM - 09:00AM	Gretchen Repasky	1.00
BI 125L 1	7044	Cellular & Molecular Bio Lab	SSC	215	LAB T	12:30PM - 03:20PM	Gretchen Repasky	0.00
BI 125L 2	7046	Cellular & Molecular Bio Lab	SSC	215	LAB W	02:00PM - 04:50PM	Gretchen Repasky	0.00
BI 225 A	7060	Evolutionary Ecology	SSC	334	MWF	11:00AM - 12:00PM	Peter Van Zandt	1.00
BI 301 A	7063	Genetics	SSC	130	MWF	08:00AM - 09:00AM	Pamela Hanson	1.00
BI 301 B	7065	Genetics	SSC	130	MWF	09:30AM - 10:30AM	Leo Pezzementi	1.00
BI 301L 1	7067	Genetics Lab	SSC	211	LAB M	02:00PM - 04:50PM	Pamela Hanson	0.00
BI 301L 2	7070	Genetics Lab	SSC	211	LAB T	12:30PM - 03:20PM	Leo Pezzementi	0.00
BI 301L 3	7071	Genetics Lab	SSC	211	LAB W	02:00PM - 04:50PM	Melanie Styers	0.00
BI 314 A	7076	Conservation Biology	SSC	334	MW	12:30PM - 01:50PM	Scot Duncan	1.00
BI 314L 1	7078	Conservation Biology Lab	SSC	105	LAB M	02:00PM - 04:50PM	Scot Duncan	0.00
BI 408 A	7080	Biochemistry	SSC	336	MWF	08:00AM - 09:00AM	David Schedler	1.00
BI 408L 1	7081	Biochemistry Lab	SSC	207	LAB TH	12:30PM - 03:20PM	Gretchen Repasky	0.00
BI 442 A	7082	Comparative Vertebrate Anatomy	SSC	238	MWF	11:00AM - 12:00PM	Jeanette Runquist	1.00
BI 442L 1	7090	Comparative Vertebrate Ana Lab	SSC	219	LAB W	02:00PM - 04:50PM	Jeanette Runquist	0.00
BI 470 A	7092	Directed Research	SSC	334	T	12:30PM - 03:20PM	Pamela Hanson	1.00
BI 470 B	7093	Directed Research	SSC	334	W	02:00PM - 04:50PM	Leo Pezzementi	1.00
BI 472 A	7100	Directed Research	DHAR	DHAR			Scot Duncan	1.00
BI 472 B	7101	Directed Research	DHAR	DHAR			Andrew Gannon	1.00
BI 472 D	7104	Directed Research	DHAR	DHAR			Pamela Hanson	1.00
BI 472 E	7113	Directed Research	DHAR	DHAR			Leo Pezzementi	1.00
BI 472 F	7116	Directed Research	DHAR	DHAR			Gretchen Repasky	1.00
BI 472 G	7121	Directed Research	DHAR	DHAR			Jeanette Runquist	1.00
BI 472 H	7123	Directed Research	DHAR	DHAR			Wayne Shew	1.00
BI 472 I	7126	Directed Research	DHAR	DHAR			Peter Van Zandt	1.00
CH 121 A	6993	General Chemistry I	SSC	134	MWF	09:30AM - 10:30AM	Scott Dorman	1.00
CH 121 B	6994	General Chemistry I	SSC	134	MWF	11:00AM - 12:00PM	Clyde Stanton	1.00
CH 121L 1	6995	General Chemistry I Lab	SSC	315	LAB T	12:30PM - 03:20PM	Laura Stultz	0.00
CH 121L 2	6996	General Chemistry I Lab	SSC	315	LAB W	02:00PM - 04:50PM	Joe Finkel	0.00
CH 121L 3	6997	General Chemistry I Lab	SSC	315	LAB W	06:30PM - 09:20PM	Joe Finkel	0.00
CH 121L 4	6998	General Chemistry I Lab	SSC	315	LAB TH	08:00AM - 10:50AM	Joe Finkel	0.00

CH 121L 5	6999	General Chemistry I Lab	SSC	315	LAB TH	12:30PM - 03:20PM	Joe Finkel	0.00
CH 121L 6	7450	General Chemistry I Lab	SSC	315	LAB T	08:00AM - 10:50AM	Scott Dorman	0.00
CH 121T 1	7000	General Chemistry Tutorial	SSC	134	MF	02:00PM - 03:20PM	Scott Dorman	0.00
CH 121T 2	7001	General Chemistry Tutorial	SSC	138	MF	02:00PM - 03:20PM	Clyde Stanton	0.00
CH 149 A-1Y	7002	Chemical Principles	SSC	336	MWF	11:00AM - 12:00PM	Laura Stultz	1.00
CH 149L 1	7003	Chem Principles Lab	SSC	301	LAB TH	12:30PM - 03:20PM	Laura Stultz	0.00
CH 211 A	7005	Organic Chemistry I	SSC	138	MWF	11:00AM - 12:00PM	David Schedler	1.00
CH 211L 1	7007	Organic Chemistry I Lab	SSC	317	LAB T	08:00AM - 10:50AM	R. Arnold-Stanton	0.00
CH 211L 2	7008	Organic Chemistry I Lab	SSC	317	LAB T	12:30PM - 03:20PM	David Schedler	0.00
CH 211L 3	7009	Organic Chemistry I Lab	SSC	317	LAB W	02:00PM - 04:50PM	David Schedler	0.00
CH 311 A	7011	Physical Chemistry I	SSC	336	MWF	09:30AM - 10:30AM	Clyde Stanton	1.00
CH 311L 1	7012	Physical Chemistry I Lab	SSC	309	LAB W	02:00PM - 04:50PM	Clyde Stanton	0.00
CH 401 A	7013	Senior Seminar in Chemistry	DHAR	DHAR			Scott Dorman	0.50
CH 408 A	7015	Biochemistry	SSC	336	MWF	08:00AM - 09:00AM	David Schedler	1.00
CH 408L 1	7017	Biochemistry Lab	SSC	207	LAB TH	12:30PM - 03:20PM	Gretchen Repasky	0.00
CH 410 A	7018	Senior Research in Chemistry	DHAR	DHAR			Scott Dorman	1.00
CH 410 B	7020	Senior Research in Chemistry	DHAR	DHAR			David Schedler	1.00
CH 410 C	7021	Senior Research in Chemistry	DHAR	DHAR			Clyde Stanton	1.00
CH 410 D	7023	Senior Research in Chemistry	DHAR	DHAR			Laura Stultz	1.00
CL 211 A	7508	Mythology	HC	317	TTH	02:00PM - 03:20PM	Sam Pezzillo	1.00
CS 170 A	6962	Introduction to Computing	O	205	LEC MWF	11:00AM - 12:00PM	Richard Turner	1.00
CS 170 B	6963	Introduction to Computing	O	201	LAB MWF	11:00AM - 12:00PM		
			O	202	LEC TTH	08:00AM - 09:20AM	Lewis Patterson	1.00
			O	201	LAB TTH	08:00AM - 09:20AM		
CS 170 C	6964	Introduction to Computing	O	205	LEC MWF	02:00PM - 03:00PM	Richard Turner	1.00
			O	201	LAB MWF	02:00PM - 03:00PM		
CS 171 A-1Y	6965	Computers and the Mind's Eye	O	205	LEC TTH	02:00PM - 03:20PM	Marietta Cameron	1.00
			O	201	LAB TTH	02:00PM - 03:20PM		
CS 250 A	6966	Advanced Programming	O	205	LEC TTH	12:30PM - 01:50PM	Richard Turner	1.00
			O	201	LAB TTH	12:30PM - 01:50PM		
CS 290 A	6967	Data Structures	O	205	LEC MWF	12:30PM - 01:30PM	Marietta Cameron	1.00
			O	201	LAB MWF	12:30PM - 01:30PM		
CS 420 A	6968	Database Management Systems	O	202	LEC MWF	12:30PM - 01:30PM	Lewis Patterson	1.00
			O	204	LAB MWF	12:30PM - 01:30PM		
CS 430 A	6969	Data Communications	O	202	LEC MWF	09:30AM - 10:30AM	Lewis Patterson	1.00
			O	204	LAB MWF	09:30AM - 10:30AM		
CS 465 A	6970	Artificial Intelligence	O	202	LEC TTH	09:30AM - 10:50AM	Marietta Cameron	1.00
			O	201	LAB TTH	09:30AM - 10:50AM		
DA 101 A	7204	Basic Ballet	ST	1	MWF	11:00AM - 12:00PM	Teri Weksler	0.50
DA 102 A	7206	Jazz Dance	ST	1	MWF	09:30AM - 10:30AM	(STAFF)	0.25
DA 103 A	7207	Basic Modern Dance	ST	1	MWF	12:30PM - 01:30PM	Teri Weksler	0.25
DA 201 A	7209	Ballet Technique	ST	1	MWF	02:00PM - 03:20PM	Kelly Harper Avery	0.50
DA 203 A	7405	Modern Dance	ST	1	MWF	03:30PM - 04:30PM	Teri Weksler	0.25
DA 210 A	7214	Student Choreography Workshop	ST	C	MTWTHF	03:30PM - 10:00PM	Henry/Popovich	0.25
DA 301 A	7216	Intermediate Ballet Tech	ST	C	MTWTHF	12:30PM - 01:50PM	Ruth Henry	1.00
DA 303 A	7217	Classical Ballet Repertoire	ST	C	MWF	11:00AM - 12:00PM	Mira Popovich	0.25
DA 350 A	7219	Dance History I	ST	2	TTH	02:00PM - 03:20PM	Ruth Henry	1.00
DA 401 A	7220	Advanced Ballet Technique	ST	C	MTWTHF	09:30AM - 10:50AM	Mira Popovich	1.00
DA 410 A	7221	Dance Pedagogy	ST	2	TTH	08:00AM - 09:20AM	Mira Popovich	0.50
EC 201 A	7185	Principles of Economics I	HB	202	TTH	08:00AM - 09:20AM	Aubrey Drewry	1.00
EC 201 B	7186	Principles of Economics I	HB	225	TTH	09:30AM - 10:50AM	Aubrey Drewry	1.00
EC 202 A	7187	Principles of Economics II	HB	225	TTH	12:30PM - 01:50PM	Kathleen Rossmann	1.00
EC 202 B	7188	Principles of Economics II	HB	202	MW	11:00AM - 12:20PM	Paul Cleveland	1.00
EC 202 C	7189	Principles of Economics II	HB	227	MW	02:00PM - 03:20PM	Paul Cleveland	1.00
EC 308 A	7190	Macroeconomics	HB	225	MW	03:30PM - 04:50PM	Paul Cleveland	1.00
EC 311 A	7194	Quant Analysis for Bus & Econ	HB	202	WF	08:00AM - 09:20AM	Bert Morrow	1.00
EC 430 A	7191	Econ Growth and Development	HB	228	MW	12:30PM - 01:50PM	Kathleen Rossmann	1.00
ED 111 A	7279	Golf I	STRP	STRP	T	12:30PM - 01:50PM	Duane Reboul	0.25
ED 112 A	7281	Golf II	STRP	STRP	TH	12:30PM - 01:50PM	Duane Reboul	0.25
ED 121 A	7284	Strength Training	STRP	STRP	F	09:30AM - 10:50AM	Duane Reboul	0.25
ED 126 A	7287	Tennis I	TC	TC	T	09:30AM - 10:50AM	Duane Reboul	0.25
ED 127 A	7289	Tennis II	TC	TC	TH	09:30AM - 10:50AM	Duane Reboul	0.25
ED 128 A	7292	Racquetball	STRP	STRP	W	02:00PM - 03:20PM	Duane Reboul	0.25
ED 129 A	7295	Basketball	STRP	STRP	M	02:00PM - 03:20PM	Duane Reboul	0.25
ED 201 A	7304	Intro to Education	HB	102	TTH	08:00AM - 09:20AM	Clint E. Bruess	1.00
ED 219 A	7306	Creative Arts in Teaching	HB	126	MW	02:00PM - 03:20PM	Eileen Moore	1.00
ED 219L 1	7308	Creative Arts in Tch - Lab	DHAR	DHAR	LAB		Eileen Moore	0.00
ED 315 A	7324	Reading I: Developmental Read	HB	101	TTH	08:00AM - 09:20AM	G. McCorquodale	1.00
ED 315L 1	7326	Reading I: Dev Reading Lab	DHAR	DHAR	LAB		G. McCorquodale	0.00
ED 317 A	7329	Teaching Social Studies	HB	101	MW	12:30PM - 01:50PM	Kelly Russell	1.00
ED 317L 1	7331	Tch Soc Studies - Lab	DHAR	DHAR	LAB		Kelly Russell	0.00
ED 318 A	7334	Reading III : Children's Lit	HB	101	TTH	09:30AM - 10:50AM	G. McCorquodale	1.00
ED 318L 1	7336	Tch Reading III - Lab	DHAR	DHAR	LAB		G. McCorquodale	0.00
ED 323 A	7339	Teaching High School Subjects	HB	126	TTH	08:00AM - 09:20AM	Mary Jane Turner	0.75
ED 340 A	7340	Meth for Tch Eh Lang Ar Sec Ed	HB	126	TTH	09:30AM - 10:50AM	Mary Jane Turner	0.25

ED 341 A	7341 Meth for Tch Mod Forei Lang-Se	HB	126	TTH	09:30AM - 10:50AM	Mary Jane Turner	0.25
ED 342 A	7342 Meth for Tch Math in Sec Ed	HB	126	TTH	09:30AM - 10:50AM	Mary Jane Turner	0.25
ED 343 A	7343 Meth for Tch Soc Stud Sec Ed	HB	126	TTH	09:30AM - 10:50AM	Mary Jane Turner	0.25
ED 360 A	7347 Collaborative Teaching Methods	HB	102	MW	09:30AM - 10:50AM	Carol Standifer	1.00
ED 360L 1	7348 Collab Tch Meth - Lab	DHAR DHAR LAB				Carol Standifer	0.00
ED 410 A	7349 Internship II	DHAR DHAR				G. McCorquodale	1.50
ED 411 A	7351 Internship III	DHAR DHAR				G. McCorquodale	1.50
ED 470 A	7353 Seminar in Teaching Technology	HB	126	TTH	12:30PM - 01:50PM	Eileen Moore	1.00
ED 470L 1	7355 Seminar in Teaching Lab	DHAR DHAR LAB				Eileen Moore	0.00
ED 471 A	7356 Education Seminar	DHAR DHAR				Clint E. Bruess	1.00
EH 102 A	7102 Introduction to Writing	HC	317	MW	08:00AM - 09:20AM (STAFF)		1.00
EH 102 B	7103 Introduction to Writing	HC	317	TTH	08:00AM - 09:20AM	Tynes Cowan	1.00
EH 102 C	7105 Introduction to Writing	HC	005	MW	09:30AM - 10:50AM (STAFF)		1.00
EH 102 D	7106 Introduction to Writing	HC	315	MWF	08:00AM - 09:00AM	Gail Smith	1.00
EH 102 E	7107 Introduction to Writing	HC	303	TTH	09:30AM - 10:50AM	Rachel Clevenger	1.00
EH 102 F	7108 Introduction to Writing	HC	317	TTH	09:30AM - 10:50AM	Tynes Cowan	1.00
EH 102 G	7109 Introduction to Writing	HC	213	MWF	11:00AM - 12:00PM	Clare Clifford	1.00
EH 102 H	7110 Introduction to Writing	HC	218	TTH	12:30PM - 01:50PM	Jane Archer	1.00
EH 102 I	7111 Introduction to Writing	O	101	TTH	02:00PM - 03:20PM	David Ullrich	1.00
EH 102 J	7112 Introduction to Writing	HC	005	TTH	12:30PM - 01:50PM	Rachel Clevenger	1.00
EH 102 K	7114 Introduction to Writing	HC	005	TTH	02:00PM - 03:20PM	Rachel Clevenger	1.00
EH 102 L	7115 Introduction to Writing	HC	319	TTH	08:00AM - 09:20AM (STAFF)		1.00
EH 102 M	7520 Introduction to Writing	HC	007	TTH	02:00PM - 03:20PM	Clare Clifford	1.00
EH 102 N	7521 Introduction to Writing	HC	317	MW	12:30PM - 01:50PM	Clare Clifford	1.00
EH 200 A	7117 Intro to Literature	HC	003	MWF	09:30AM - 10:30AM	Tynes Cowan	1.00
EH 204 A	7118 Writing for the Print Media	HC	213	MW	08:00AM - 09:20AM	Peter Donahue	1.00
EH 205 A	7119 Intro to Creative Writing	HC	315	TTH	08:00AM - 09:20AM	Sandra Sprayberry	1.00
EH 208 A	7120 Intermediate Writing	HC	319	TTH	09:30AM - 10:50AM	Clare Clifford	1.00
EH 208 B	7122 Intermediate Writing	HC	303	TTH	12:30PM - 01:50PM	Kent Andersen	1.00
EH 210 A	7124 Introduction to Fiction	O	101	TTH	09:30AM - 10:50AM	David Ullrich	1.00
EH 210 B	7125 Introduction to Fiction	HC	315	MW	02:00PM - 03:20PM	Jane Archer	1.00
EH 212 A-1Y	7127 Intro to Science Fiction	HC	005	TTH	09:30AM - 10:20AM	Kent Andersen	1.00
EH 212 B-1Y	7506 Intro to Science Fiction	HC	213	TTH	08:00AM - 09:20AM	Kent Andersen	1.00
EH 220 A-1Y	7129 Lit and the Social Experience	HC	315	TTH	12:30PM - 01:50PM	Tynes Cowan	1.00
EH 220 B-1Y	7131 Lit and the Social Experience	HC	303	MWF	12:30PM - 01:30PM	John Tatter	1.00
EH 230 A	7135 Plural America I	HC	315	TTH	09:30AM - 10:50AM	Sprayberry/Nicholas	1.00
EH 249 A	7137 Lit and the Visual Arts	HC	315	TTH	02:00PM - 03:20PM	Susan Hagen	1.00
EH 250 A	7138 Survey of British Literature	HC	303	MWF	11:00AM - 12:00PM	Michael McInturff	1.00
EH 260 A	7151 Survey of American Literature	HC	007	MWF	09:30AM - 10:30AM	Gail Smith	1.00
EH 301 A	7153 Fiction Workshop	HC	010	MW	02:00PM - 03:20PM	Peter Donahue	1.00
EH 351 A	7155 Medieval British Lit (Cat. 3)	HC	317	MWF	09:30AM - 10:30AM	Susan Hagen	1.00
EH 388 A	7157 Lit & Cul of Amer Rena(Cat.2)	HC	218	MWF	12:30PM - 01:30PM	Gail Smith	1.00
EH 390 A	7159 20 Cent Brit & Am Poet(Cat.1)	HC	303	TTH	02:00PM - 03:20PM	Sandra Sprayberry	1.00
EH 395 A	7161 Cont Internat Fiction (Cat.4)	HC	319	MW	11:00AM - 12:20PM	Jane Archer	1.00
EH 420 A	7162 Studies in the Drama (Cat.5)	HC	317	TTH	12:30PM - 01:50PM	John Tatter	1.00
EH 470 A	7164 English Seminar	HC	303	MW	02:00PM - 03:20PM	Michael McInturff	1.00
EPY 223 A	7310 Human Growth and Development	HB	102	TTH	09:30AM - 10:50AM	Kelly Russell	1.00
EPY 223L 1	7311 Hum Growth & Dev - A-Lab	DHAR DHAR LAB				Kelly Russell	0.00
EPY 223 B-1Y	7314 Human Growth and Development	HB	126	MWF	09:30AM - 10:30AM	Eileen Moore	1.00
EPY 223L 2	7317 Hum Growth & Dev - B-1Y LAB	DHAR DHAR LAB				Eileen Moore	0.00
EPY 260 A	7319 Survey of Exceptional Children	HB	102	MW	11:00AM - 12:20PM	Carol Standifer	1.00
EPY 260L 1	7322 Surv of Except Child - Lab	DHAR DHAR LAB				Carol Standifer	0.00
EPY 320 A	7337 Educational Psychology	HB	102	TTH	02:00PM - 03:20PM	Carol Standifer	1.00
EPY 320L 1	7338 Educational Psych - Lab	DHAR DHAR LAB				Carol Standifer	0.00
ES 150 A	7048 Intro Environmental Studies	SSC	334	TTH	09:30AM - 10:50AM	Scot Duncan	1.00
ES 150L 1	7050 Intro Envir Stud Lab	SSC	105	LAB TH	12:30PM - 03:20PM	Scot Duncan	0.00
FR 101 A	6925 Elementary French I	M	310	MTWTHF	09:30AM - 10:25AM	Margaret King	1.00
FR 101 B	6926 Elementary French I	HC	112	MTWTHF	12:30PM - 01:25PM	Margaret King	1.00
FR 201 A	6927 Fund of French Grammar	HC	319	MTWTHF	02:00PM - 02:55PM	Renee Norrell	1.00
FR 220 A	6944 Intermediate French	M	311	WF	09:30AM - 10:50AM	Leah Dupre	1.00
FR 270 A	6946 Conversation francaise	HC	319	MWF	12:30PM - 01:30PM	Renee Norrell	1.00
FR 315 A	6947 Adv Grammar and Composition	HC	319	MW	03:30PM - 04:50PM	Renee Norrell	1.00
GN 101 A	6958 Elementary German I	HC	218	MTWTHF	09:30AM - 10:25AM	Judith Cox	1.00
GN 220 A	6959 Intermediate German	HC	215	MWF	11:00AM - 12:00PM	Judith Cox	1.00
GN 270 A	7489 Gesprachsdeutsch	HC	003	TTH	02:00PM - 03:20PM	Judith Cox	1.00
GN 310 A	6960 German Landeskunde	HC	215	MWF	12:30PM - 01:30PM	Judith Cox	1.00
HI 102 A	7087 European Civilization I	SSC	130	MWF	12:30PM - 01:30PM	Law/Lester	1.00
HI 120 A-1Y	7084 History of Terrorism	HC	303	MWF	09:30AM - 10:30AM	Randy Law	1.00
HI 151 A	7086 History of American People I	HC	112	MWF	11:00AM - 12:00PM	Victoria Ott	1.00
HI 151 B	7449 History of American People I	SSC	238	MWF	09:30AM - 10:30AM	Victoria Ott	1.00
HI 152 A-1Y	7085 History of American People II	HC	315	MWF	11:00AM - 12:00PM	Bill Nicholas	1.00
HI 181 A-1Y	7083 East Asian Civil I : China	HC	215	MWF	09:30AM - 10:30AM	Matthew Levey	1.00
HI 230 A	7097 Plural America I	HC	315	TTH	09:30AM - 10:50AM	Nicholas/Sprayberry	1.00

HI 241 A	7089	Monarchs, Rebellion, & Empire	HC	213	MW	09:30AM - 10:50AM	Mark Lester	1.00
HI 265 A	7091	The Mid East in 20th Cent	HC	007	MW	02:00PM - 03:20PM	Mark Lester	1.00
HI 284 A	7088	Modern Japan	HC	215	MWF	02:00PM - 03:00PM	Matthew Levey	1.00
HI 287 A	7099	Western Images of Asia	HC	215	TTH	02:00PM - 03:20PM	Matthew Levey	1.00
HI 301 A	7095	Amer Revolu & the Feder Period	HC	315	WF	12:30PM - 01:50PM	Victoria Ott	1.00
HI 320 A	7098	America Since 1940	HC	319	TTH	12:30PM - 01:50PM	Bill Nicholas	1.00
HI 346 A	7096	Russia in the 20th Century	HC	003	TTH	09:30AM - 10:50AM	Randy Law	1.00
HI 470 A	7094	Senior Research Symposium	HC	303	MW	03:30PM - 04:50PM	Victoria Ott	1.00
HON 125 A-1Y	7236	America's Music	H	106	MW	02:00PM - 03:20PM	Lester Seigel	1.00
HON 207 A	6908	Civil Rights and Justice	HB	328	M	02:00PM - 04:50PM	Ed LaMonte	1.00
HON 220 A	7150	International Film I	AR	10	MW	02:00PM - 04:50PM	Robert Shelton	1.00
HON 222 A	7133	Frankenstein Meets Snow White	O	101	TTH	12:30PM - 01:50PM	Cox/Ullrich	1.00
HON 225 A	6933	Creativity: Person & Process	HB	328	WF	11:00AM - 12:20PM	Goodrick/Anderson	1.00
HON 230 A	7136	Plural America I	HC	315	TTH	09:30AM - 10:50AM	Nicholas/Sprayberry	1.00
HON 249 A	7249	Lit and the Visual Arts	HC	315	TTH	02:00PM - 03:20PM	Susan Hagen	1.00
HON 301 A	7398	Who Is Jesus?	SSC	138	TTH	02:00PM - 03:20PM	Willimon/Blackerby	1.00
HON 393 A	7409	Independent Study	DHAR	DHAR			Susan Hagen	0.50
HON 493 A	7247	Honors Project	DHAR	DHAR			Susan Hagen	0.50
HON 493 B	7248	Honors Project	DHAR	DHAR			Susan Hagen	1.00
IS 100 A	6912	Intro to International Studies	HB	325	MW	02:00PM - 03:20PM	Robert Slagter	1.00
IS 101 A	6913	Pre-Depart Topics Study Abroad	HB	304	M	04:50PM - 06:20PM	Anne Ledvina	0.50
IS 101 B	6914	Pre-Depart Topics Study Abroad	HB	304	M	04:50PM - 06:20PM	Anne Ledvina	0.25
LA 101 A	7054	Elementary Latin I	HC	319	MWF	09:30AM - 10:30AM	Sam Pezzillo	1.00
LA 101 B	7055	Elementary Latin I	HC	317	MWF	02:00PM - 03:00PM	Sam Pezzillo	1.00
LS 200 A	6911	Lead. Stud:Theory & Practice	HB	304	MW	11:00AM - 12:20PM	Ed LaMonte	1.00
LS 400 A	6961	Capstone Sr Leadership Sem	O	202	TH	04:00PM - 05:20PM	Jeanne L. Jackson	0.50
MA 115 A	6971	Fundamentals of Algebra	O	102	MWF	08:00AM - 09:00AM	Carl Brezausek	1.00
MA 115 B	7490	Fundamentals of Algebra	O	101	MWF	09:30AM - 10:30AM	Carl Brezausek	1.00
MA 124 A	6972	Precalculus Mathematics	O	102	TTH	02:00PM - 03:20PM	(STAFF)	1.00
MA 124 B	7491	Precalculus Mathematics	O	104	MWF	11:00AM - 12:00PM	E. Ray Miller	1.00
MA 150 B-1Y	6974	Intro to Mathematical Modeling	O	104	TTH	12:30PM - 01:50PM	Jeffrey Barton	1.00
MA 150 C	6975	Intro to Mathematical Modeling	O	104	TTH	08:00AM - 09:20AM	(STAFF)	1.00
MA 150 D	6976	Intro to Mathematical Modeling	O	104	TTH	09:30AM - 10:50AM	Jeffrey Barton	1.00
MA 207 A	6977	General Statistics	O	104	MWF	08:00AM - 09:00AM	Wesley Eddings	1.00
MA 207 B	6978	General Statistics	O	104	MWF	09:30AM - 10:30AM	Wesley Eddings	1.00
MA 231 A	6979	Calculus I	O	102	MWF	09:30AM - 10:30AM	Mary Jane Turner	1.00
MA 231 B	6981	Calculus I	O	101	MWF	11:00AM - 12:00PM	Mary Jane Turner	1.00
MA 231 C	6982	Calculus I	O	101	MWF	12:30PM - 01:30PM	Doug Riley	1.00
MA 231 D	6983	Calculus I	O	101	MWF	02:00PM - 03:00PM	E. Ray Miller	1.00
MA 231 E	7492	Calculus I	O	101	MWF	08:00AM - 09:00AM	(STAFF)	1.00
MA 232 A	6984	Calculus II	O	102	MWF	11:00AM - 12:00PM	Bernadette Mullins	1.00
MA 232 B	6985	Calculus II	O	102	MWF	12:30PM - 01:30PM	Bernadette Mullins	1.00
MA 250 A-1Y	6986	Mathematical Modeling	O	105	TTH	12:30PM - 01:50PM	Doug Riley	1.00
MA 310 A	6987	Calculus III	O	105	MWF	11:00AM - 12:00PM	Doug Riley	1.00
MA 317 A	6988	Linear Algebra	O	104	MWF	12:30PM - 01:30PM	Wesley Eddings	1.00
MA 335 A	6989	Transition to Higher Math	O	102	MWF	02:00PM - 03:00PM	Bernadette Mullins	1.00
MA 458 A	6991	Intro to Complex Analysis	O	105	MWF	02:00PM - 03:00PM	Jeffrey Barton	1.00
MED 331 A	7223	Elementary School Music Method	H	104			Ron Hooten	1.00
MED 335 A	7224	Secondary School Music Methods	H	104			Ron Hooten	1.00
MED 341 A	7225	Teaching Strings	H	DHAR			Ron Hooten	0.25
MED 343 A	7226	Teaching Woodwinds	H	DHAR			Jack Sharp	0.25
MED 414 A	7227	Teaching Internship VI	H	DHAR			Ron Hooten	1.25
MED 415 A	7228	Teaching Internship VII	H	DHAR			Ron Hooten	1.25
MED 436 A	7229	Piano Pedagogy II	H	DHAR			Constance Moore	0.25
MS 110 A	7267	Piano	H	DHAR			William DeVan	0.25
MS 110 B	7268	Piano	H	DHAR			Constance Moore	0.25
MS 110 C	7269	Piano	H	DHAR			Ellen Tweiten	0.25
MS 110 D	7270	Piano	H	DHAR			Virginia Dismukes	0.25
MS 110 Z	7271	Piano	H	DHAR			(STAFF)	0.25
MS 120 A	7272	Voice	H	DHAR			Mildred Allen	0.25
MS 120 B	7273	Voice	H	DHAR			J. Leary-Warsaw	0.25
MS 120 C	7274	Voice	H	DHAR			David Smith	0.25
MS 120 D	7275	Voice	H	DHAR			Jan K. Hill	0.25
MS 120 E	7276	Voice	H	DHAR			Angela Horn-Barrett	0.25
MS 120 F	7277	Voice	H	DHAR			William Martin	0.25
MS 130 A	7278	Organ	H	DHAR			James Cook	0.25
MS 140 A	7280	Violin	H	DHAR			Anne Pandolfi	0.25
MS 140 B	7282	Viola	H	DHAR			(STAFF)	0.25
MS 140 C	7283	Cello	H	DHAR			Craig Hultgren	0.25
MS 140 D	7285	String Bass	H	DHAR			(STAFF)	0.25
MS 150 A	7286	Flute	H	DHAR			Lisa Bartlett	0.25
MS 150 B	7288	Oboe	H	DHAR			(STAFF)	0.25
MS 150 C	7290	Clarinet	H	DHAR			Judy Donaldson	0.25
MS 150 D	7291	Bassoon	H	DHAR			Jack Sharp	0.25

MS 150 E	7293	Saxophone	H	DHAR		Jack Sharp	0.25
MS 150 F1	7294	French Horn	H	DHAR		Steve Harrington	0.25
MS 150 F2	7400	French Horn	H	DHAR		Dave Pandolfi	0.25
MS 150 G	7296	Trumpet	H	DHAR		Paul Jackson	0.25
MS 150 H	7297	Trombone	H	DHAR		Jay Evans	0.25
MS 150 I	7298	Tuba	H	DHAR		(STAFF)	0.25
MS 150 J	7299	Orchestral Winds/Others	H	DHAR		(STAFF)	0.25
MS 150 K1	7300	Percussion	H	DHAR		Bill Williams	0.25
MS 150 K2	7301	Percussion	H	DHAR		(STAFF)	0.25
MS 160 A	7302	Classical Guitar	H	108		Karlo Senasi	0.25
MS 310 A	7303	Piano	H	DHAR		William DeVan	0.50
MS 310 B	7305	Piano	H	DHAR		Constance Moore	0.50
MS 310 C	7307	Piano	H	DHAR		Ellen Tweiten	0.50
MS 310 D	7309	Piano	H	DHAR		Virginia Dismukes	0.50
MS 310 Z	7312	Piano	H	DHAR		(STAFF)	0.50
MS 320 A	7313	Voice	H	DHAR		Mildred Allen	0.50
MS 320 B	7315	Voice	H	DHAR		J. Leary-Warsaw	0.50
MS 320 C	7316	Voice	H	DHAR		David Smith	0.50
MS 320 D	7318	Voice	H	DHAR		Jan K. Hill	0.50
MS 320 E	7320	Voice	H	DHAR		Angela Horn-Barrett	0.50
MS 320 F	7321	Voice	H	DHAR		William Martin	0.50
MS 330 A	7323	Organ	H	DHAR		James Cook	0.50
MS 340 A	7325	Violin	H	DHAR		Anne Pandolfi	0.50
MS 340 B	7327	Viola	H	DHAR		(STAFF)	0.50
MS 340 C	7328	Cello	H	DHAR		Craig Hultgren	0.50
MS 340 D	7330	String Bass	H	DHAR		(STAFF)	0.50
MS 350 A	7332	Flute	H	DHAR		Lisa Bartlett	0.50
MS 350 B	7333	Oboe	H	DHAR		(STAFF)	0.50
MS 350 C	7335	Clarinet	H	DHAR		Judy Donaldson	0.50
MS 350 D	7350	Bassoon	H	DHAR		Jack Sharp	0.50
MS 350 E	7352	Saxophone	H	DHAR		Jack Sharp	0.50
MS 350 F1	7354	French Horn	H	DHAR		Steve Harrington	0.50
MS 350 F2	7402	French Horn	H	DHAR		Dave Pandolfi	0.50
MS 350 G	7357	Trumpet	H	DHAR		Paul Jackson	0.50
MS 350 H	7358	Trombone	H	DHAR		Jay Evans	0.50
MS 350 I	7359	Tuba	H	DHAR		(STAFF)	0.50
MS 350 J	7360	Orchestral Winds/Other	H	DHAR		(STAFF)	0.50
MS 350 K1	7361	Percussion	H	DHAR		Bill Williams	0.50
MS 350 K2	7362	Percussion	H	DHAR		(STAFF)	0.50
MS 360 A	7363	Classical Guitar	H	108		Karlo Senasi	0.50
MS 410 A	7364	Piano	H	DHAR		William DeVan	1.00
MS 410 B	7397	Piano	H	DHAR		Constance Moore	1.00
MS 410 C	7366	Piano	H	DHAR		Ellen Tweiten	1.00
MS 410 D	7367	Piano	H	DHAR		Virginia Dismukes	1.00
MS 420 A	7369	Voice	H	DHAR		Mildred Allen	1.00
MS 420 B	7370	Voice	H	DHAR		J. Leary-Warsaw	1.00
MS 420 C	7371	Voice	H	DHAR		David Smith	1.00
MS 420 D	7528	Voice	H	DHAR		Angela Horn-Barrett	1.00
MS 430 A	7375	Organ	H	DHAR		James Cook	1.00
MS 440 A	7377	Violin	H	DHAR		Anne Pandolfi	1.00
MS 440 B	7378	Viola	H	DHAR		(STAFF)	1.00
MS 440 C	7379	Cello	H	DHAR		Craig Hultgren	1.00
MS 440 D	7380	String Bass	H	DHAR		(STAFF)	1.00
MS 450 A	7381	Flute	H	DHAR		Lisa Bartlett	1.00
MS 450 B	7382	Oboe	H	DHAR		(STAFF)	1.00
MS 450 C	7383	Clarinet	H	DHAR		Judy Donaldson	1.00
MS 450 D	7384	Bassoon	H	DHAR		Jack Sharp	1.00
MS 450 E	7385	Saxophone	H	DHAR		Jack Sharp	1.00
MS 450 F1	7386	French Horn	H	DHAR		Steve Harrington	1.00
MS 450 F2	7403	French Horn	DHAR	DHAR		Dave Pandolfi	1.00
MS 450 G	7387	Trumpet	H	DHAR		Paul Jackson	1.00
MS 450 H	7388	Trombone	H	DHAR		Jay Evans	1.00
MS 450 I	7389	Tuba	H	DHAR		(STAFF)	1.00
MS 450 J	7390	Orchestral Winds/Other	H	DHAR		(STAFF)	1.00
MS 450 K1	7391	Percussion	H	DHAR		Bill Williams	1.00
MS 450 K2	7392	Percussion	H	DHAR		(STAFF)	1.00
MS 460 A	7393	Classical Guitar	H	108		Karlo Senasi	1.00
MU 112 A	7230	Southern Chorale	H	RECI	TTH 03:30PM - 05:00PM	David Smith	0.25
MU 113 A	7231	Chamber Orchestra	H	DHAR		Mark Ridings	0.25
MU 121 A	7232	Introduction to Music	H	117	MWF 12:30PM - 01:30PM	Matthew Phillips	1.00
MU 124 A	7233	Music in Live Performance	H	117	TTH 09:30AM - 10:50AM	Michael Huebner	1.00
MU 125 A-1Y	7235	America's Music	H	106	MW 02:00PM - 03:20PM	Lester Seigel	1.00
MU 126 A-1Y	7237	Music of the World's People	H	117	TTH 02:00PM - 03:20PM	James Cook	1.00
MU 136 A	7238	Basic Music Skills & Concepts	H	104	MWF 09:30AM - 10:30AM	Ron Hooten	1.00
MU 142 A	7239	New Music Ensemble	H	104	MF 03:30PM - 04:50PM	Craig Hultgren	0.25
MU 150 A-1Y	7240	Fundamentals of Music	H	117	MWF 11:00AM - 12:00PM	Dorothy Hindman	1.00
MU 151 A	7241	Elementary Theory I	H	117	MWF 09:30AM - 10:30AM	Dorothy Hindman	0.50
MU 153 A	7242	Beginning Ear Training I	H	106	TTH 08:00AM - 09:20AM	Neal Matherne	0.25
MU 155 A	7243	Advanced Ear Training I	H	106	TTH 09:30AM - 10:50AM	Neal Matherne	0.25

MU 159 A	7244	Beginning Keyboard Harmony I	H	122	TTH	09:30AM - 10:50AM	Adam Bowles	0.25
MU 161 A	7245	Advanced Keyboard Harmony I	H	122	TTH	08:00AM - 09:20AM	Adam Bowles	0.25
MU 211 A	7396	Concert Choir	H	123	TTH	03:30PM - 04:50PM	Lester Seigel	0.25
			H	123	M	05:00PM - 06:20PM		
MU 215 A	7250	Wind Ensemble	H	104	TTH	03:30PM - 05:30PM	Ron Hooten	0.25
MU 217 A	7251	Jazz Band	H	104	M	06:30PM - 08:30PM	Ron Hooten	0.25
MU 242 A	7252	Opera Workshop	H	123	MWF	02:00PM - 03:00PM	Mildred Allen	0.25
MU 243 A	7253	Diction for Singers	H	117	TTH	12:30PM - 01:50PM	J. Leary-Warsaw	0.50
MU 251 A	7254	Advanced Theory I	H	106	MWF	09:30AM - 10:30AM	Charles Mason	0.50
MU 321 A	7255	Music History I	H	106	MWF	11:00AM - 12:00PM	James Cook	1.00
MU 341 A	7256	Ensemble	H	123			(STAFF)	0.25
MU 343 A	7257	Accompanying	H	DHAR			Adam Bowles	0.25
MU 355 A	7258	Composition	H	102	TTH	12:30PM - 01:50PM	Charles Mason	0.50
MU 427 A	7260	Choral Literature	H	106	TTH	02:00PM - 03:20PM	Lester Seigel	0.50
MU 450 A	7261	Orchestration	H	106	MWF	12:30PM - 01:30PM	Dorothy Hindman	0.50
MU 455 A	7262	Advanced Composition	H	DHAR			Charles Mason	1.00
PL 201 A	7523	Introduction to Philosophy	HC	003	MW	02:00PM - 03:20PM	Bill Myers	1.00
PL 241 A	7062	Logic	M	311	TTH	09:30AM - 10:50AM	Bill Myers	1.00
PL 250 A	7057	Contemporary Philosophy	HC	213	TTH	09:30AM - 10:50AM	Steve Hendley	1.00
PL 251 A	7059	Hist of Western Philosophy I	HC	112	MWF	09:30AM - 10:30AM	Steve Hendley	1.00
PL 361 A	7064	Topics in Phil of Religion	HC	004	TTH	02:00PM - 03:20PM	Bill Myers	1.00
PL 470 A	7061	Seminar in Philosophy	HC	004	MW	11:00AM - 12:20PM	Steve Hendley	1.00
PH 121 A	6915	General Physics I	SSC	130	TTH	09:30AM - 10:50AM	Mark Rupright	1.00
PH 121L 1	6917	General Physics I Lab	SSC	115	LAB T	12:30PM - 03:20PM	Duane H. Pontius, Sr	0.00
PH 121L 2	6918	General Physics I Lab	SSC	115	LAB W	02:00PM - 04:50PM	Duane H. Pontius, Sr	0.00
PH 121L 3	6919	General Physics I Lab	SSC	115	LAB TH	12:30PM - 03:20PM	Duane H. Pontius, Sr	0.00
PH 121T 1	6916	Gen Physics Tutorial	SSC	130	MF	02:00PM - 03:20PM	Mark Rupright	0.00
PH 201 A	6922	Mathematical Tools for Physics	SSC	336	MWF	12:30PM - 01:30PM	Duane H. Pontius, Jr	1.00
PH 303 A	6923	Optical Physics	SSC	238	TTH	09:30AM - 10:50AM	Duane H. Pontius, Jr	1.00
PH 303L 1	6924	Optical Physics Lab	DHAR	DHAR	LAB		Duane H. Pontius, Jr	0.00
PS 101 A	6890	Intro to American Govt & Pol	HB	329	LEC MW	08:00AM - 09:00AM	Robert Slagter	1.00
			HB	301	LAB F	08:00AM - 09:00AM		
PS 101 B	6892	Intro to American Govt & Pol	HB	329	LEC MW	09:30AM - 10:30AM	Robert Slagter	1.00
			HB	301	LAB F	09:30AM - 10:30AM		
PS 195 A-1Y	6897	Pol, Media, and Pol Culture	HB	327	TTH	09:30AM - 10:50AM	Natalie Davis	1.00
PS 204 A	6898	Survey Data Anal. & Stats.	HB	328	TTH	09:30AM - 10:50AM	Dalto/Rossmann	1.00
PS 204L 1	7395	Survey Data Anal & Stats Lab	HB	301	LAB TH	02:00PM - 03:20PM	Dalto/Rossmann	0.00
PS 235 A	6902	Intro to Internatl Relations	HB	327	MW	08:00AM - 09:20AM	Vincent Gawronski	1.00
PS 235 B	7452	Intro to Internatl Relations	HB	325	MW	12:30PM - 01:50PM	Vincent Gawronski	1.00
PS 240 A	6904	Intro to Latin Amer Politics	HB	325	MW	09:30AM - 10:50AM	Vincent Gawronski	1.00
PS 250 A	6906	The Public Policy Process	HC	112	TTH	09:30AM - 10:50AM	Ed LaMonte	1.00
PS 307 A	6907	Civil Rights and Justice	HB	328	M	02:00PM - 04:50PM	Ed LaMonte	1.00
PS 340 A	6909	Comparative Elite Behavior	HB	327	TTH	03:30PM - 04:50PM	Natalie Davis	1.00
PS 368 A	7408	Political Violence	HB	DHAR	TTH	12:30PM - 01:50PM	Vincent Gawronski	1.00
PS 470 A	6910	Seminar for Majors	HB	327	M	02:00PM - 04:50PM	Natalie Davis	1.00
PY 101 A	6891	Introduction to Psychology	O	102	TTH	09:30AM - 10:50AM	Richard Rector	1.00
PY 101 B	6893	Introduction to Psychology	SSC	334	MWF	09:30AM - 10:30AM	Heather Meggers-Wright	1.00
PY 101 C	6894	Introduction to Psychology	HB	325	MWF	11:00AM - 12:00PM	Heather Meggers-Wright	1.00
							ht	
PY 101 D	6896	Introduction to Psychology	HB	327	TTH	02:00PM - 03:20PM	Terry Goodrick	1.00
PY 101 E	6899	Introduction to Psychology	HB	328	MW	08:00AM - 09:20AM	Richard Rector	1.00
PY 101 F	6900	Introduction to Psychology	HB	328	TTH	08:00AM - 09:20AM	Richard Rector	1.00
PY 101 G	7482	Introduction to Psychology	SSC	134	TTH	12:30PM - 01:50PM	Lynne Trench	1.00
PY 204 A	6901	Statistics for Research	HB	329	TTH	09:30AM - 10:50AM	Rick McCallum	1.00
PY 204 B	6905	Statistics for Research	HB	329	TTH	12:30PM - 01:50PM	Rick McCallum	1.00
PY 204L 1	6928	Research Lab	HB	301	LAB T	02:30PM - 03:30PM	Rick McCallum	0.00
PY 204L 2	6929	Research Lab	HB	301	LAB T	03:30PM - 04:30PM	Rick McCallum	0.00
PY 205 A-1Y	6930	Intro to Forensic Psychology	HB	328	TTH	12:30PM - 01:50PM	Tricia Witte	1.00
PY 205 B-1Y	7479	Intro to Forensic Psychology	HB	325	TTH	09:30AM - 10:50AM	Tricia Witte	1.00
PY 206 A	6931	Why People Believe Weird Thing	HB	325	TTH	02:00PM - 03:20PM	Shane Pitts	1.00
PY 206 B	7494	Why People Believe Wierd Thing	HB	325	TTH	12:30PM - 01:50PM	Shane Pitts	1.00
PY 225 A	6932	Creativity: Person & Process	HB	328	WF	11:00AM - 12:20PM	Goodrick/Anderson	1.00
PY 309 A	6934	Work Behavior	HB	328	MW	12:30PM - 01:50PM	Rick McCallum	1.00
PY 313 A	6935	Psychological Disorders	HB	327	TTH	12:30PM - 01:50PM	Heather Meggers-Wright	1.00
							ht	
PY 407 A	6936	Cognitive Psychology	SSC	336	TTH	09:30AM - 10:50AM	Shane Pitts	1.00
PY 407L 1	6937	Cognitive Psych Lab	HB	301	LAB W	02:00PM - 03:20PM	Shane Pitts	0.00
PY 407L 2	6938	Cognitive Psych Lab	HB	301	LAB W	03:30PM - 04:50PM	Shane Pitts	0.00
PY 408 A	6939	Psychology of Learning	SSC	134	TTH	09:30AM - 10:50AM	Lynne Trench	1.00
PY 408L 1	6940	Psychology of Learning Lab	SSC	007	LAB T	02:00PM - 03:20PM	Lynne Trench	0.00
PY 408L 2	6941	Psychology of Learning Lab	SSC	007	LAB W	03:30PM - 04:50PM	Lynne Trench	0.00
PY 410 A	6943	Hist and Systems of Psychology	HB	304	MW	02:00PM - 03:20PM	Terry Goodrick	1.00
PY 417 A	6942	Research in Psychology	HB	304	MW	12:30PM - 01:50PM	Lynne Trench	1.00

RE 201 A	7069	Introduction to Christianity	HC	315	MWF	09:30AM - 10:30AM	Lawrence Brasher	1.00
RE 205 A	7075	Old Testament	HC	303	TTH	08:00AM - 09:20AM	Amy Cottrill	1.00
RE 215 A	7077	New Testament	HC	213	TTH	12:30PM - 01:50PM	Amy Cottrill	1.00
RE 215 B	7478	New Testament	HC	315	MW	03:30PM - 04:50PM	Sally Allocca	1.00
RE 221 A	7079	Religions of The East	HC	112	MWF	02:00PM - 03:00PM	Amy Cottrill	1.00
RE 231 A	7072	Religion and Society	HC	317	MW	11:00AM - 12:20PM	Lawrence Brasher	1.00
RE 315 A	7074	Contemporary Christian Theolog	HC	007	TTH	09:30AM - 10:50AM	Lawrence Brasher	1.00
RE 340 A	7068	The Pauline Writings	SSC	138	TTH	12:30PM - 01:50PM	Bishop Robert Morgan	1.00
RE 370 A	7066	Spec Topics: Parables of Jesus	SSC	138	TTH	09:30AM - 10:50AM	Bishop Robert Morgan	1.00
SN 101 A	6948	Elementary Spanish I	HC	010	MTWTHF	08:00AM - 08:55AM	Kim Lewis	1.00
SN 201 A	6949	Fund of Spanish Grammar	HC	215	MTWTHF	08:00AM - 08:55AM	Barbara Domcekova	1.00
SN 201 B	6950	Fund of Spanish Grammar	HC	010	MTWTHF	09:30AM - 10:25AM	Kim Lewis	1.00
SN 201 C	6951	Fund of Spanish Grammar	HC	003	MTWTHF	12:30PM - 01:25PM	J. Ramos de Harthun	1.00
SN 201 D	6952	Fund of Spanish Grammar	HC	010	MTWTHF	12:30PM - 01:25PM	Kim Lewis	1.00
SN 201 E	6953	Fund of Spanish Grammar	HC	213	MTWTHF	02:00PM - 02:55PM	Kim Lewis	1.00
SN 201 F	7406	Fund of Spanish Grammar	HC	007	MTWTHF	12:30PM - 01:25PM	Barbara Domcekova	1.00
SN 220 A	6954	Intermediate Spanish	HC	007	MWF	11:00AM - 12:00PM	Janie Spencer	1.00
SN 220 B	7522	Intermediate Spanish	HC	005	MWF	02:00PM - 03:00PM	Janie Spencer	1.00
SN 270 A-1Y	7407	Tertulia Espanola	HC	003	MWF	11:00AM - 12:00PM	J. Ramos de Harthun	1.00
SN 270 B	6955	Tertulia Espanola	HC	213	MWF	12:30PM - 01:30PM	Janie Spencer	1.00
SN 300 A	6956	Advanced Conversation	HC	215	TTH	09:30AM - 10:50AM	Barbara Domcekova	1.00
SN 350 A	6957	Latinos in the United States	HC	218	MW	02:00PM - 03:20PM	J. Ramos de Harthun	1.00
SO 101 A	6980	Introduction to Sociology	HB	101	LEC WF	09:30AM - 10:30AM	Alicia Weaver	1.00
			HB	301	LAB M	09:30AM - 10:30AM		
SO 101 B	6990	Introduction to Sociology	HB	329	LEC WF	11:00AM - 12:00PM	Alicia Weaver	1.00
			HB	301	LAB M	11:00AM - 12:00PM		
SO 101 C	7458	Introduction to Sociology	HB	325	LEC WF	08:00AM - 09:00AM	Russell Davis	1.00
			HB	301	LAB M	08:00AM - 09:00AM		
SO 102 A	6992	Contemporary Social Problems	HB	327	MW	09:30AM - 10:50AM	Guy Dalto	1.00
SO 102 B	7004	Contemporary Social Problems	HB	327	MW	11:00AM - 12:20PM	Guy Dalto	1.00
SO 204 A	7006	Survey Data Anal. and Stats.	HB	328	TTH	09:30AM - 10:50AM	Dalto/Rossmann	1.00
SO 204L 1	7010	Survey Data Anal & Stats Lab	HB	301	LAB TH	02:00PM - 03:20PM	Dalto/Rossmann	0.00
SO 309 A	7014	Work Behavior	HB	328	MW	12:30PM - 01:50PM	Rick McCallum	1.00
SO 370 A	7016	Sociology of Medicine	HB	329	TTH	02:00PM - 03:20PM	Alicia Weaver	1.00
SP 101 A	7034	Introduction to Speech	HC	112	TTH	02:00PM - 03:20PM	Julia Matson	1.00
THA 101 A	7019	Theatre Practicum	TH	DHAR			Litsey/Mielke	0.25
THA 102 A	7022	Theatre Practicum	TH	DHAR			Litsey/Mielke	0.50
THA 111 A	7024	Make-up	TH	DHAR	TTH	09:30AM - 10:50AM	Matthew Mielke	0.50
THA 120 A-1Y	7027	Beginning Acting	TH	1	MWF	11:00AM - 12:00PM	Alan Litsey	1.00
THA 120 B	7035	Beginning Acting	TH	1	MWF	12:30PM - 01:30PM	Charla Cochran	1.00
THA 201 A	7041	Theatre Practicum	TH	DHAR			Litsey/Mielke	0.25
THA 202 A	7043	Theatre Practicum	TH	DHAR			Litsey/Mielke	0.50
THA 210 A	7045	Technical Workshop	TH	DHAR			Matthew Mielke	0.50
THA 211 A	7047	Stage Lighting	TH	RED	MWF	09:30AM - 10:30AM	Matthew Mielke	1.00
THA 301 A	7049	Theatre Praticum	TH	DHAR			Litsey/Mielke	0.25
THA 302 A	7051	Theatre Praticum	TH	DHAR			Litsey/Mielke	0.50
THA 401 A	7052	Theatre Practicum	TH	DHAR			Litsey/Mielke	0.25
THA 402 A	7053	Theatre Praticum	TH	DHAR			Litsey/Mielke	0.50
THA 403 A	7394	Directing and Stage Management	TH	1	MW	02:00PM - 03:20PM	Alan Litsey	1.00

528 records listed

EH 102 J	12:30PM	TTH	PLACEMENT	HI 301 A	12:30PM	WF	SOPH YR	MU 153 A	08:00AM	TTH	NONE
EH 102 K	02:00PM	TTH	PLACEMENT	HI 320 A	12:30PM	TTH	SOPH YR	MU 155 A	09:30AM	TTH	MU 154
EH 102 L	08:00AM	TTH	PLACEMENT	HI 346 A	09:30AM	TTH	SOPH YR	MU 159 A	09:30AM	TTH	NONE
EH 102 M	02:00PM	TTH	PLACEMENT	HI 470 A	03:30PM	MW	CONSENT	MU 161 A	08:00AM	TTH	MU 160
EH 102 N	12:30PM	MW	PLACEMENT					MU 211 A	03:30PM	TTH	NONE
EH 200 A	09:30AM	MWF	EH 102	HON 125 A-1Y	02:00PM	MW	1 ST YR		05:00PM	M	
		or	EH 208				HON PRG	MU 215 A	03:30PM	TTH	NONE
EH 204 A	08:00AM	MW	EH 102	HON 207 A	02:00PM	MHON	PRG	MU 217 A	06:30PM	MNONE	
		or	EH 208	HON 220 A	02:00PM	MW	HON PRG	MU 242 A	02:00PM	MWF	NONE
EH 205 A	08:00AM	TTH	EH 102	HON 222 A	12:30PM	TTH	HON PRG	MU 243 A	12:30PM	TTH	NONE
		or	EH 208	HON 225 A	11:00AM	WF	HON PRG	MU 251 A	09:30AM	MWF	MU 152
EH 208 A	09:30AM	TTH	EH 102	HON 230 A	09:30AM	TTH	HON PRG	MU 321 A	11:00AM	MWF	MU 123
EH 208 B	12:30PM	TTH	EH 102	HON 249 A	02:00PM	TTH	HON PRG				MU 152
EH 210 A	09:30AM	TTH	EH 208	HON 301 A	02:00PM	TTH	HON PRG				EH 102
		or	EH 102	HON 393 A	DHAR		HON PRG	MU 341 A	DHAR		NONE
EH 210 B	02:00PM	MW	EH 208	HON 493 A	DHAR		HON PRG	MU 343 A	DHAR		NONE
		or	EH 102	HON 493 B	DHAR		HON PRG	MU 355 A	12:30PM	TTH	NONE
EH 212 A-1Y	09:30AM	TTH	1 ST YR	IS 100 A	02:00PM	MW	NONE	MU 427 A	02:00PM	TTH	NONE
EH 212 B-1Y	08:00AM	TTH	1 ST YR	IS 101 A	04:50PM	M CONSENT		MU 450 A	12:30PM	MWF	MU 252,
EH 220 A-1Y	12:30PM	TTH	EH 102	IS 101 B	04:50PM	M CONSENT		MU 455 A	DHAR		MU 355
		or	EH 208					MU 501 AM	DHAR		GRAD ST
		1 ST YR		LA 101 A	09:30AM	MWF	NONE	MU 521 AM	DHAR		GRAD ST
EH 220 B-1Y	12:30PM	MWF	EH 102	LA 101 B	02:00PM	MWF	NONE	MU 551 AM	DHAR		GRAD ST
		or	EH 208					MU 555 AM	DHAR		GRAD ST
		1 ST YR		LS 200 A	11:00AM	MW	SOPH YR	MU 555 BM	DHAR		GRAD ST
EH 230 A	09:30AM	TTH	EH 102	LS 400 A	04:00PM	TH	NONE				
		or	EH 208					PH 121 A	09:30AM	TTH	NONE
EH 249 A	02:00PM	TTH	EH 102					PH 121T 1	02:00PM	MF	
		or	EH 208	MA 115 A	08:00AM	MWF	PLACEMENT	PH 201 A	12:30PM	MWF	PH 122
EH 250 A	11:00AM	MWF	EH 102	MA 115 B	09:30AM	MWF	PLACEMENT			MA 232	
		or	EH 208	MA 124 A	02:00PM	TTH	PLACEMENT	PH 303 A	09:30AM	TTH	MA 232
EH 260 A	09:30AM	MWF	EH 102	MA 124 B	11:00AM	MWF	PLACEMENT				
		or	EH 208	MA 150 B-1Y	12:30PM	TTH	MA 115				
EH 301 A	02:00PM	MW	EH 205,				1 ST YR	PL 201 A	02:00PM	MW	NONE
EH 351 A	09:30AM	MWF	EH 200 + LIT	MA 150 C	08:00AM	TTH	MA 115	PL 241 A	09:30AM	TTH	NONE
EH 388 A	12:30PM	MWF	EH 200 + LIT	MA 150 D	09:30AM	TTH	MA 115	PL 250 A	09:30AM	TTH	NONE
EH 390 A	02:00PM	TTH	EH 200 + LIT	MA 207 A	08:00AM	MWF	MA 115	PL 251 A	09:30AM	MWF	NONE
EH 395 A	11:00AM	MW	EH 200 + LIT	MA 207 B	09:30AM	MWF	MA 115	PL 361 A	02:00PM	TTH	1 PL
EH 420 A	12:30PM	TTH	3 LIT COURSES	MA 231 A	09:30AM	MWF	MA 124				Other than PL 241
		OF AT LEAST		MA 231 B	11:00AM	MWF	MA 124	PL 470 A	11:00AM	MW	2 PL
		300 LEVEL		MA 231 C	12:30PM	MWF	MA 124				300 level
EH 470 A	02:00PM	MW	SR ST	MA 231 D	02:00PM	MWF	MA 124				
				MA 231 E	08:00AM	MWF	MA 124	PS 101 A	08:00AM	MWF	NONE
				MA 232 A	11:00AM	MWF	MA 231	PS 101 B	09:30AM	MWF	NONE
ES 150 A	09:30AM	TTH	NONE	MA 232 B	12:30PM	MWF	MA 231	PS 195 A-1Y	09:30AM	TTH	1 ST YEAR
				MA 250 A-1Y	12:30PM	TTH	1 ST YR	PS 204 A	09:30AM	TTH	1 MA FROM:
FR 101 A	09:30AM	M-F	CONSENT	MA 310 A	11:00AM	MWF	MA 232				MA 115,124,
FR 101 B	12:30PM	M-F	CONSENT	MA 317 A	12:30PM	MWF	MA 232				150,207,231,
FR 201 A	02:00PM	M-F	CONSENT	MA 335 A	02:00PM	MWF	MA 232				232,240,250,
FR 220 A	09:30AM	WF	FR 102	MA 458 A	02:00PM	MWF	MA 310				MA 254
		or	FR 201				MA 335				SO 101
FR 270 A	12:30PM	MWF	FR 220								or PS 101
FR 315 A	03:30PM	MW	FR 280	MED 331 A	DHAR		MU 152	PS 235 A	08:00AM	MW	NONE
		or	FR 270	MED 335 A	DHAR		MU 152	PS 235 B	12:30PM	MW	NONE
				MED 341 A	DHAR		MU 152	PS 240 A	09:30AM	MW	NONE
GN 101 A	09:30AM	M-F	NONE	MED 343 A	DHAR		MU 152	PS 250 A	09:30AM	TTH	NONE
GN 220 A	11:00AM	MWF	GN 102	MED 414 A	DHAR		TEP	PS 307 A	02:00PM	M CONSENT	
GN 270 A	02:00PM	TTH	GN 220	MED 415 A	DHAR		TEP	PS 340 A	03:30PM	TTH	NONE
GN 310 A	12:30PM	MWF	GN 270	MED 436 A	DHAR		MED 435	PS 368 A	12:30PM	TTH	PS 238
		or	GN 280								PS 240
				MS ALL	DHAR		NONE	PS 470 A	02:00PM	MSR	ST
HI 102 A	12:30PM	MWF	NONE								
HI 120 A-1Y	09:30AM	MWF	1 ST YR	MU 112 A	03:30PM	TTH	NONE	PY 101 A	09:30AM	TTH	NONE
HI 151 A	11:00AM	MWF	NONE	MU 113 A	DHAR		NONE	PY 101 B	09:30AM	MWF	NONE
HI 151 B	09:30AM	MWF	NONE	MU 121 A	12:30PM	MWF	NONE	PY 101 C	11:00AM	MWF	NONE
HI 152 A-1Y	11:00AM	MWF	1 ST YR	MU 124 A	09:30AM	TTH	NONE	PY 101 D	02:00PM	TTH	NONE
HI 181 A-1Y	09:30AM	MWF	1 ST YR	MU 125 A-1Y	02:00PM	MW	1 ST YR	PY 101 E	08:00AM	MW	NONE
HI 230 A	09:30AM	TTH	EH 102				CONSENT	PY 101 F	08:00AM	TTH	NONE
		or	EH 208	MU 126 A-1Y	02:00PM	TTH	1 ST YR	PY 101 G	12:30PM	TTH	NONE
HI 241 A	09:30AM	MW	NONE	MU 136 A	09:30AM	MWF	NONE	PY 204 A	09:30AM	TTH	NONE
HI 265 A	02:00PM	MW	NONE	MU 142 A	03:30PM	MF	NONE	PY 204 B	12:30PM	TTH	NONE
HI 284 A	02:00PM	MWF	NONE	MU 150 A-1Y	11:00AM	MWF	1 ST YR	PY 205 A-1Y	12:30PM	TTH	1 ST YR
HI 287 A	02:00PM	TTH	SOPH YR	MU 151 A	09:30AM	MWF	CONSENT	PY 205 B-1Y	09:30AM	TTH	1 ST YR

GENERAL INFORMATION

WEB REGISTRATION USING THESIS

Registration for the Summer Term 2007 and Fall Term 2007 took place online using TheSIS.

You planned your class schedule online. You met with your advisor the week before registration. You discussed your proposed class schedule with your advisor. Your advisor approved your schedule. You received a time to register by email from the Records Office. You registered for your courses.

Thank you for making our first online web registration a success....

Please check your BSC email box often for emails from the Records Office or Danny Brooks, Dean of Records for information on future registrations.

COURSES REPEATED AND REDEEMED

If you plan to re-take (redeem) a course, please contact Danny Brooks, Dean of Academic Records prior to registering. Any course repeated is done with the understanding that the last grade earned will take precedence over all previous grades earned. All work attempted and all grades earned will be shown on the student's transcript. A student who has passed a course with a grade of "C" or higher may repeat the course only on an audit basis. A student who has earned a grade of "C-" or below in a course may redeem the course under the following conditions:

1. A course may be redeemed only by repeating the same course at Birmingham-Southern College (or at the same institution where the course was originally taken).
2. Before a course taken elsewhere may be redeemed, the Dean of Academic Records and the chair of the appropriate department must approve the choice of the course to be taken.
3. No credit will be granted for the first time the course was taken, and the first course will be listed on the student's transcript as "**redeemed**." The grade from the first course will appear on the transcript but will not be used to compute the student's grade point average.
4. A student may redeem a course a second time, but in such a case both the second and third grade will be used to compute the student's grade point average.

Important Telephone Numbers

Records

226-4698

Provost's Office

226-4650

Graduation Checks	226-4686	Student Accounts	226-7871
Financial Aid	226-4688	Student Affairs	226-4722
HelpDesk	226-3033	Online Reg Help	226-4607

BACHE PROGRAM



The **BACHE** Cooperative Course Exchange Program (Birmingham Area Consortium of Higher Education) dramatically expands the variety of course offerings available to students within the colleges and universities of the Consortium, which include BSC, Samford, UAB, Montevallo, and Miles College. Full-time students enrolled at a BACHE Institution who are in good academic standing at the home campus may, with written permission from their academic advisor and Provost and at no additional charge, take a course at another BACHE campus if it is deemed to be beneficial to the student's overall educational program. For course exchange policy and registration forms visit the Office of Records on campus or call Barbara Brown, 226-4697.

SCHEDULE CHANGES AFTER REGISTRATION

All schedule changes require the advisor's approval of the change. A student who has pre-registered for any term may add or drop courses on the registration date for that term. After that date, changes in schedule are made through the Office of Records. A fee of \$20 is charged for each change after the first two weeks of class unless the change is at the request of the College. No course may be added after the first two weeks of a term during the regular academic year or after the first week of a summer term. All schedule changes which require a fee will be automatically billed to your student account.

NEW ADD COURSE POLICY / PROCEDURE

Beginning the Fall Term 2005, BSC implemented a new policy regarding adding courses. During the first week of classes, students are required to obtain only their advisor's signature as in the past. However, after the first week of classes, a student must obtain both instructor and advisor signature to add a course. The dropping course procedure will remain the same. All drops require advisor signature only.

CAMPUS BUILDING ABBREVIATIONS

AR Kennedy Art Center
DHAR Days/Hours to be arranged

PA Phillips Science Annex
PH Phillips Administration Building

H	James Blaine Hill Music Building
HB	Marguerite Jones Harbert Building
LIB	N.E. Miles Library/Rush Learning Center
M	Munger Memorial Hall
O	Franklin Olin CS/Math Center
HAN	Hanson Solarium
HC	Neal and Anne Berte Humanities Center
WR	Weight Room

PL	Meyer Planetarium
SCHL	Teach at Schools
STRP	Striplin Fitness Center
SLC	Stephens Lab Center
ST	Dance Studio in Old Gym
SSC	Stephens Science Center
TH	College Theatre
TC	Tennis Courts

VETERAN BENEFITS INFORMATION

All Veterans receiving financial benefits must see the Office of Student Financial Aid in the Student Services Building prior to each term to review their enrollment status. This procedure will expedite your payments and reduce delays in processing.

STUDENT FINANCIAL AID SERVICES

Students must be enrolled for three (12.0 semester hours) or more units to be considered for scholarships at Birmingham-Southern College. To receive federal funds, a student must be enrolled at least half-time (with the exception of the Pell Grant -- student may receive Pell if enrolled less than 1/2 time). The Alabama Student Grant application must be filed with the Office of Financial Aid prior to September 15. *Financial Aid is located on the 1st floor, Student Services Building.*

FAMILY EDUCATION RIGHTS AND PRIVACY ACT (FERPA)

Birmingham-Southern College is in compliance with the policies and procedures regarding privacy of student records as described in the Family Educational Rights and Privacy Act of 1974. Directory information which may be provided to persons outside of the College includes student name, address, telephone number, email address, photo, major field of study, dates of attendance, degrees and awards received, the most recent previous education agency or institution attended by the student, participation in college activities and sports. Students may withhold directory information annually by notifying the **Dean of Academic Records** in writing. Such notification must be given within ten days of the first day of class for a particular term. The request to withhold directory information will remain in effect as long as the student continues to be enrolled, or until the student files a written request with the Dean of Academic Records to discontinue the withholding. Students have the option of removing only their photo from the BSC website and not withholding their directory information. Please contact Records for this service. Students wishing to review their educational records must make written request to the Dean of Academic Records. Only records covered by the Act will be made available within forty-five days of the request. A fee of \$3, payable in advance, is charged for each copy.

The Dean of Academic Records has the institutional responsibility for interpreting (a) the Family Educational Rights and Privacy Act of 1974, as amended, (b) rules and regulations issued by the Department of Education, to enforce this Act, and (c) the written policy of the institution.

T H E S I S



Birmingham-Southern College is proud to offer students *TheSIS*, the student information system on the web. *TheSIS* enables students to access their student records and register for courses online in real-time and faculty to access advisee information in the same manner. You may access *TheSIS* at the main page of the BSC web page located at www.bsc.edu or at the Records web page at www.bsc.edu/records, which will direct you to a secure server.

If you have problems logging into *TheSIS* or any other technical problems, please contact the Help Line at 3033. If your problem is grades or records related, please contact Records at 4677.

ARC – ACADEMIC RESOURCE CENTER



The Academic Resource Center aims to enhance, coordinate, and promote the academic support services available to students, faculty, and staff at Birmingham-Southern College. The centers and labs that form the Academic Resource Center have a cross-curricular emphasis, providing services that complement one another and share, philosophically and practically, in the goal of advancing student academic success and faculty and staff development. ARC offers training, tutoring, and general assistance in a wide range of concepts, skills and practices relevant to academic achievement, with a special emphasis on information fluency. For additional information, please visit our website at:

<http://www.bsc.edu/library/arc/default.htm>

CAMPUS MAP



Campus Map Legend

<u>1- Sports Center, Dance & Southern Environmental Center</u>	<u>15- Robert R. Meyer Planetarium</u>	41- Sorority Townhouses
<u>2- James Blaine Hill Music Building</u>	<u>16- Yeilding Chapel</u>	50- Methodist Conference Center
<u>3- Marguerite Jones Harbert Building</u>	<u>17- Franklin W. Olin Computer Science/Mathematics Center</u>	51- Greensboro Road (Faculty/Staff Housing)
<u>4- Phillips Administration Building (Admission)</u>	<u>18- Larry D. Striplin Jr. Fitness Center</u>	
<u>5- Munger Memorial Hall (President, Provost, Finance, Human Resources)</u>	<u>19- William & Julia Edwards Bell Tower</u>	<u>70- Scrushy-Striplin Baseball Field</u>
<u>6- Stockham Building (Alumni Affairs, Communications, Development)</u>	<u>20- Alumni Plaza & Fountain</u>	<u>72-BSC Soccer Park</u>
<u>7- Elton B. Stephens Science Center</u>	<u>31- Virginia Goodwin Residence Hall</u>	<u>73- Intramural Fields</u>
<u>8- Neal and Anne Berte Humanities Center</u>	<u>32- Lee and Nancy Bruno Residence Hall</u>	74- BSC Tennis Complex
<u>9- Edward L. & Corinne Norton Campus Center</u>	<u>33- Margaret Daniel Residence Hall</u>	75- BSC Softball Park
<u>10- Doris Wainwright Kennedy Art Center/Azar Art Studios</u>	<u>34- Cullen Daniel Residence Hall</u>	<u>76- Fraternity Row</u>
<u>11- College Theatre</u>	<u>35- New Men's Residence Hall</u>	81- Bruno Entrance/Campus Police
<u>12- Charles Andrew Rush Learning Center/N. E. Miles Library</u>	<u>36- Bill & Lyndra Daniel Residence Hall</u>	
<u>13- Student Services Building/Bill Battle Coliseum</u>	<u>37- Hanson Residence Hall</u>	
<u>14- Simpson Building</u>	40 - President's Home	P= Parking Lot

ACADEMIC CALENDAR, FALL TERM 2007

(64 Class Days)

Thursday, August 23	New Faculty Orientation
Friday, August 24.....	Opening of School Faculty/Staff Assembly
Saturday, August 25	New Students Arrive on Campus
	Residence Halls Open for New Students at 8:00 a.m.
Saturday, August 25 – Tuesday, August 28	Orientation for New Students
Saturday, August 25	Convocation for New Students and Parents
Sunday, August 26	Residence Halls Open for Returning Students at 10:00 a.m.
Wednesday, August 29.....	First Day of Fall-Term Classes
Monday, September 3.....	Labor Day (No Classes)
Wednesday, September 12.....	Last Day to Drop a Course Without Tuition Proration
	Last Day to Add a Course, to Select S/U Option, and to Change a Course from Grade to Audit
	Last Day for VA Recipients to Add or Drop a Course
Wednesday, September 26	Last Day for Adjustment of Tuition
	Last Day to Drop a Course Without a Grade
Wednesday, October 10.....	Professors Report Mid-Term Assessments
Monday, October 15.....	Mid-Term Assessments Available on TheSIS
Wednesday, October 17	Last Day to Drop a Course With Grade of “W”
Thursday, October 18 – Sunday, October 21	Fall Break
Wednesday, November 21 – Sunday, November 25.....	Thanksgiving Break
	Residence Halls Close Wednesday, November 21, at 10:00 a.m.
	Residence Halls Open Sunday, November 25, at Noon
Tuesday, December 4.....	Last Day of Classes
Wednesday, December 5 and Tuesday, December 11	Reading Days
Thursday, December 6; Friday, December 7; Monday, December 10;	
Wednesday, December 12; Thursday, December 13.....	Final Examinations
Friday, December 14 – Tuesday, January 1.....	Christmas Break
	Residence Halls Close Friday, December 14, at 10:00 a.m.
Monday, December 17.....	Professors Report Fall-Term Grades
Wednesday, January 2.....	Grades Available on TheSIS

READING DAYS AND FINAL EXAM SCHEDULE, FALL TERM 2007

Last day of Fall Term 2007 Classes - Tuesday December 4

READING DAYS – Wednesday, December 5 and Tuesday, December 11

	<u>Morning Exams</u> (9:00 a.m. - 12:00 noon)	<u>Afternoon Exams</u> (1:00 p.m. - 4:00 p.m.)	<u>Evening Exams</u> (6:00 p.m. - 9:00 p.m.)
Thursday, Dec. 6	9:30 MWF, MW, WF classes	Language 101/201/220 classes	3:30 MW classes
Friday, Dec. 7	12:30 MWF, MW, WF classes	2:00 MWF, MW classes	
Monday, Dec. 10	9:30 TTh classes	8:00 MWF, MW, WF classes	
Wednesday, Dec. 12	11:00 MWF, MW, WF classes	2:00 TTh classes	
Thursday, Dec. 13	12:30 TTh classes	8:00 TTh classes, & DHAR classes	

Misc. times: see professor.



Please recycle this booklet if you print it out.

This class schedule is not a contract between the college and its students. The college reserves the right to change instructors, course offerings, units, scheduled times, and college requirements as college business may require.

©Office of Records, 2007
www.bsc.edu/records